



window on **wakefield**

Your Local News

Community News for the Wakefield Area

Wakefield Community Anzac Service 2024

by Julian Eggers, Chairperson, Wakefield Community Council

At the going down of the sun and in the morning, We will remember them. What a beautiful and respectful morning. I personally would like to thank the community for your incredible attendance to the Wakefield Anzac Service. Biggest attendance I've seen for some time. This day means more than a day off, but a day to respect, honor and reflect on the service men and women, past and present, who serve and have served our country.

A team of beautiful people and organizations that need a massive thank you that made our service special. Thank you to....

- RSA Waimea
- Army Centre Group- Higgins Park
- Promote You Wakefield
- Willow Bank Heritage Village
- Nelson Cadet Unit
- Wakefield Volunteer Fire Brigade
- Nathan Dunn (sponsoring printing)
- Julian Eggers
- Wakefield Community Council
- Tasman District Council
- Ake Creative (service sheet design)
- Wakefield Police

Many thanks and love to the speakers...

- Maggie McLean - MC
- Ewan Robinson - Bagpipes
- Ewan Crouch - St John's Church
- Barry Burgess
- Juliet Thompson-Blythe - Chair, Waimea Youth Council
- Aaron Kennaway - Richmond-Waimea RSA
- Tom Addison - on behalf of Maureen Pugh MP
- Sarah Arnold
- Jamie White

Special acknowledgement: RNZAF Base Woodbourne

Yet again, what an incredible military vehicle and firearms display, which was on the village green. The Army Centre Group did a wonderful job showcasing these military items. Gives you a realistic idea of what was used during WW1, WW2 and the other wars gone past.

The Nelson Army Cadets did an incredible job with the Cenotaph Guard, Guard of Honour marching and the flags. Barry Burgess and his wife did a beautiful musical piece of 'Bring him home - Les miserables' as well as the Last Post. Euan Robertson brought the service together with three Bagpipe songs. While the community comes together, the faith of the fallen will be carried on. The spirit will live on.

Poem from Juliet Thompson-Blythe (Waimea Youth Council, Chair)

"Did the birds on the battlefield stop singing? Or did they sing ever louder, clinging to trembling, black trees as they puffed out their feathered breasts so that, maybe, their songs could be heard above the fighting.

Did the worms leave the apples, and the wasps stay in their nests? Did the flies ignore the bodies, turning their backs in unanimous silence?

Did the old dog at home lie still on the rug as its master fell far away, or did it rise up on shaking limbs to howl at the suffocating night? Did the trees, at Autumn's command, turn their leaves? Rubies, ambers, and opals that burned brighter than ever before. And in Spring, did all of the blossoms linger?

Did the Pacific, its waters stretching to the edges of the horizon, like chewing gum pulled tight, take pity on the drifting airmen, salt-crusted and brittle, given up by their countries as dead, and carry their raft to shore?

And in the mud, thick and swirling, as Winter ravaged the pock-marked earth, did nature afford a small kindness, and let the poppies grow?"

We will remember them.



WINDOW ON WAKEFIELD

How it works...

Window on Wakefield is produced and published by Waimea South Community Facility Charitable Trust. All businesses advertising in this publication incur a cost for the advertising space allocated, depending on the size and location of the advertisement. The funds raised from this advertising are used to cover the costs of printing Window on Wakefield. No parties are paid for the time involved with editing, coordinating and publishing this paper. It is the intention that if surplus funds are raised from advertising, that these will be held to be used for other community projects. The bank reconciliations and financial reports related to this account will be made available to any person who wishes to view them.

Content...

Window on Wakefield is a community newspaper, and as such, we look forward to having articles and content contributed by our community. If you wish to submit a one off article, or suggest some regular content, please make contact with Sonia on 541 9005 or email windowonwakefield@gmail.com and read the Terms and Conditions below.

We try to ensure information published is truthful and accurate, but do not check the facts of the articles and therefore cannot attest to their validity. While all reasonable care is exercised, we do not accept liability for any loss whatsoever incurred through our errors, acts or omissions in relation to the content of an article, or for any consequences of readers relying on the information published. Opinions expressed by contributors do not necessarily represent the views of the Waimea South Community Facility Charitable Trust, nor are they necessarily endorsed by the Editor or Publisher.

Advertising...

If your business wishes to advertise in Window on Wakefield, please make contact with Genie on 027 306 4237 or email info@promoteyou.co.nz and a rate card will be sent.

TERMS AND CONDITIONS REGARDING PUBLISHING OF CONTENT

- a. All articles and other content submitted for publishing must disclose the author's name or where the article/content is contributed by a community group, then that community group's name.
- b. All images should be provided to us in a high quality PDF format. We take no responsibility for the quality of reproduction for images that are not supplied to us in this format.
- c. If you wish to make changes to an article or content already submitted, please ensure these are communicated to us before the relevant deadline date.
- d. When you submit an article or other content for publishing you:
 - agree that the submitted material and/or images can be reproduced by the Editor or Publisher at any time without your prior approval
 - agree that all photographs submitted for publishing are provided free of charge, and the approval to print has been obtained from any persons shown in the photo - this is the responsibility of the person submitting the photo
 - acknowledge that all material is held by us at your risk and is not insured by us. Material will only be returned on request and may otherwise be destroyed by us
 - warrant and undertake that no statement, image, representation or information contained in your supplied article or content:
 - * is or is likely to be misleading or deceptive;
 - * is at all defamatory, in breach of copyright, trademark or other intellectual or industrial property right;
 - * is otherwise in breach of the Copyright Act 1994, Defamation Act 1992, or any provision of any Statute, Regulation or rule of law.
- e. We reserve the right to decline the publication of any article or any content whatsoever on any grounds that we in our absolute discretion see fit.



Jill O'Brien

R D 1 Wakefield
Rural Mail Contractor
**FOR ALL YOUR
MAIL NEEDS**

Stamps, Parcels, Freight
Phone 541 8963
Mobile 027 324 2126

**DID YOUR BUSINESS
MISS OUT THIS TIME**



**DON'T DESPAIR
WE HAVE SAVED
A SPOT FOR THE NEXT
PUBLICATION
JUST FOR YOUR BUSINESS**

Give us a call
027 306 4237
or
Email
info@promoteyou.co.nz

NEXT EDITION

We do our best to have it out the first full week of each month
All Advertising to be submitted by the 20th of the Month prior
All Content to be submitted by the **23rd** of the Month prior
For Advertising please contact Promote You 027 306 4237



For Content please contact All Accounts Matter Ltd 541 9005 or 03 541 9055 if calling from a cellphone



The Big Bake Up

by Melissa Woodhouse

Our team has enjoyed making many meals together in the kitchen this past month.

With a few new faces amongst the team, we have completed over 200 meals and 100 crumbles for the freezer. Working with our donations received we made Pumpkin Soup, Cottage Pie and Spaghetti and Meatballs.

Easter weekend saw a rather large delivery of frozen mince arrive. It was with great excitement that we received confirmation of a new partnership with a New Zealand charity Meat the Need. Supplying us a year's worth of mince, enough for roughly 40,000 servings. We are extremely grateful to Meat the Need for recognising and acknowledging our work.

A new addition to our ongoing support is our fresh vegetable boxes.

These are made from excess stock that we are gifted from a local grower. We collect produce for our cook ups and what we don't need we pay it forward for others to enjoy.

Couple of events for the month. Firstly the Little Sprig Wakefield Quiz Night which was a huge success for The Big Bake Up, raising \$650.

Next was the Rural Resilience Expo held at Higgins Heritage Park. A great event that is hopefully to be repeated.

Something to look forward to is our upcoming BBQ fundraiser.

Our final thanks goes to the Country Players Wakefield for their donation of a three phase oven on stand that we are able to use for our growing cook ups.

Thanks to our local community for their continued support.

From left to right:
Jo-Anne Lewis,
Valerie Crouch,
Lesley Olaman.

Follow us on facebook
or Instagram
www.thebigbakeup.com
Email:
thebigbakeup@gmail.com or
Phone: 027 209 9309



WAKEFIELDQUARRY

Drainage metal : Hard fill : Basecourse 70mm : Topcourse 40mm & 20mm
Landscape rock : Lime

**Sorry no more trailers or utes may be loaded because of the safety risk.
We do have a 2.5t tiptruck available.**



566 Church Valley Road, Wakefield

Ph: 5419093

Mon - Fri 7.30am - 5pm

Wakefield Kindy

by Judy-Anne

Wow the year is flying by, we are looking forward to this term and all the learning the winter season provides for the tamariki.

Over the last term we have celebrated Easter, (with art and baking) as well as some much needed rain. We can enclose our outside area when the weather is particularly bad, but children also have boots and jackets so they can still play outside and delight in the rain.

One of our children spotted a bi coloured praying mantis, and another a ladybird so we spent much time observing these and insect hunting. We are also watching to see if some mantis eggs will hatch.

Popular activities continue to include the sandpit, balls, bikes and scooters, monkey bars, books, playdough, art, puzzles and construction with a variety of resources.

To end the school term, we had a wonderful holiday programme which amongst other things included a teddy bear picnic, dress up days, making pumpkin soup, lots of learning about ANZAC day and a real highlight was some of us walking up to the lookout at Faulkner Bush where one tamaiti announced "This is Amazing".

Wakefield Village Kindergarten caters for children from two years old in a play-based environment. We are currently taking enrolments for later in 2024 so pop in for a visit if you are looking for a space for your special little person – we offer 18 hours free* for 2-year-olds and 30 hours free* for 3–5 year olds (T&C apply). You can find us at 20 Whitby Way, next to the Villa Café.





- *Arborist work
- *Tree felling
- *Hedge trimming
- *Tree stump removal
- *Wood chipping
- *Planting and re vegetation projects
- *And much more green care of your property

This is done by a trained arborist and nurseryman with many years of experience in plant production and the landscape business

Full insurance cover while all work is being done
 contact MORTEN for a free quote
 Ph: 021 206 9914 or 541 86 85
 email: mortenlausen@gmail.com
 www.nelsonlandscaping.co.nz
 www.facebook.com/supergreencare/

FIX UP
 SET UP
 BACK UP
 CLEAN UP
 TABLETS &
 COMPUTERS



In Nelson since 1997

548 1787
 027 224 0955

Fran's the Man!
 fran@mobilecomputing.co.nz
 Still no call-out fee & we still come to you.

southfuels

Spring Grove

Check our board – no voucher or card required, no minimum spend to receive the price advertised.

Fuel Available 24/7

Outdoor Payment Terminal
 Available with all eftpos,
 z card, major credit cards



Every time you fuel up 1 cent for every 2 litres purchased goes back to the school by way of a Southfuels Donation

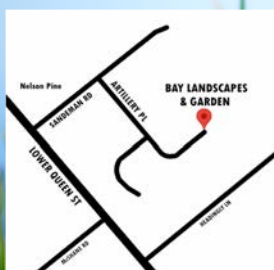


Ph 541 8444

Fax 541 8445

Main Rd North, Wakefield
 springgrove@xtra.co.nz

Bay Landscapes & Garden Centre



- Topsoil
- Compost
- Potting mix
- Gravel
- Rocks
- Bark
- Fertilisers
- Pavers
- Vegetable Seedlings
- Shrubs
- Perennials
- Natives
- Fruit Trees
- So much more!
- Locally bought, grown, made, and sourced.

Open 7 Days. Courtesy trailers and deliveries available.

38 Artillery Place, Richmond

Ph: 03 5442 076

Email: office@baylandscapes.co.nz

www.baylandscapes.co.nz

Craig Smart

CONTRACTING LTD

DIGGERS & TRUCK WORK

- Landscaping - Topsoil Screening
- Root Raking - Site Clearing
- Driveways - Gravel Supplies
- Trenching - Posthole Boring

541 9626 or 0274 440 441

craigandcath@xtra.co.nz

Have an idea for an article or something you have written that you would like to submit?

Email us at windowonwakefield@gmail.com or ring 541 9005

Wakefield Fire Brigade

by Dot Ashton



We really appreciate the support and belief that you gave towards the first Rural Resilience Expo here in the Nelson-Tasman area. Together, we demonstrated the power of community collaboration in promoting emergency preparedness and resilience in Wakefield. In the spirit of continuous improvement, we would appreciate your feedback and ideas. Your insights will be invaluable as we plan future initiatives together.

1. What aspects of the Rural Resilience Expo did you find most useful?
2. Would you like to see similar events in Wakefield?
3. Are you aware of the Wakefield Community Plan in the event of a Disaster/Event?
4. Thinking about "Preparedness", what do you feel you would like more information or help with? (this can also relate to businesses, neighbours, community groups, etc)
5. Do you have any additional comments or suggestions for enhancing community safety and resilience?



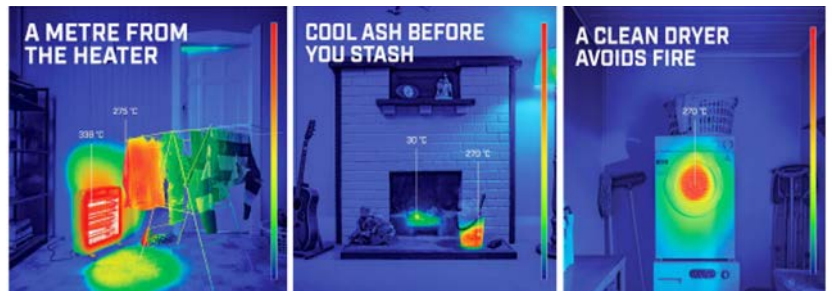
Please send through to: adaptiveresiliencesolutions@gmail.com

A final thank you to all those that came along to the first Rural Resilience Expo on Sunday 21st April. Together agencies and public demonstrated the power of community collaboration in promoting emergency preparedness in Wakefield. The team will be working on how we move forward in this space, and we will keep you posted.

Preparing for Winter

As we head into the Winter months, don't forget about your fire safety obligations around your home.

- A metre from the heater – keep everything at a safe distance.
- Cool ash before you stash - soak with water in a metal bucket.
- A clean dryer avoids fire – remove lint before every use.
- Clean out your fireplace and chimney for winter



Getting your fireplace ready for winter use is as simple as picking up the phone and calling your nearest chimney cleaning company. It's not as expensive as you might think especially when compared to the cost of losing your family home to fire. Anything can happen over the summer months: your chimney is an ideal roosting place for birds and other rodents. If your chimney is significantly blocked, then a fire can easily start from trapped sparks coming back down the flue: not to mention the smoke danger.

All of the above examples, when not done correctly result in a house fire, which we do not want to happen in our community. Also ensure that your smoke alarms are working, and you have enough for your house. If you are unsure or would like some help with this, our team can come and check with a free Home Safety Visit. Give us a call on : 0800 693 473.

Callouts for April:

Medical x 6

Structure Fire x2

Total for the year : 75

Rubbish fire x 1

Motor Vehicle Crash x1

Assist Police x1

VILLA UPHOLSTERY

A black and white illustration of a tufted sofa with a diamond pattern on the backrest and seat.

Craig 022 351 5989 Cherie 022 352 5991

**CUSTOM DESIGN & BUILD CHAIRS, SOFAS, OTTOMANS
RECOVERY & REPAIR**

**Don't just build
Create!**

From Concept to Completion.

The logo for Kernow Construction, featuring a stylized 'K' and the text 'KERNOW CONSTRUCTION'.

JASON PRELLER A.N.C.H
021 167 3803
kernow4construction@gmail.com
Visit Website: kernowdesign.nz

A circular logo for Building Practitioner, with the text 'BUILDING PRACTITIONER' and 'www.dia.govt.nz' around the perimeter.

Meet the Locals - Michael Meissner

Courtesy of Bo Hensley [originally published on www.wakefield.org.nz]

The Villa - Wakefield

My love for cooking started when I was just a young apprentice in Germany. I've always enjoyed cooking for others, even though I don't cook much for myself.



After working in hotels all over the world, including Switzerland, Los Angeles, Hawaii, the Caribbean and on cruise liners like the QM II, I decided to move to Nelson/Tasman and open my own cafe... and it was a great decision! After seven years of running The Villa, I have found the perfect work-life balance. When I'm not at the cafe, you can find me exploring mountain bike tracks or climbing mountains. I'm also learning to play the guitar and love a good BBQ with friends.



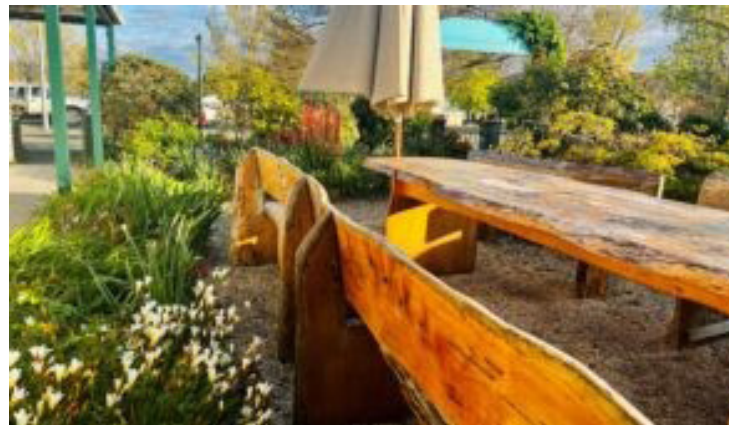
The Villa is located in an old villa which was built in 1910 and quickly became a local Wakefield favourite. The menu at The Villa is inspired by my German heritage and features homemade cakes and slices alongside New Zealand favourites like scones and muffins. For those with dietary restrictions, there are plenty of gluten-free options available. The Villa is also a popular spot for private functions and work get togethers, with set menu dinners that are often booked out in advance.

The cafe was even named a finalist for the 2017 Outstanding Suburban Venue of the Year Nelson/Tasman and won the Regional Winner Café of the Year 2018 (upper South Island). Plus, it received a TripAdvisor Excellent Award in 2018 and a TripAdvisor Travels Choice award in 2020.



Just as an extra... in addition to running The Villa, I have also started a new business called IT Fix Up, which helps people with their IT problems, software or Wi-Fi set ups and network security. (www.ifixup.co.nz).

I look forward to meeting you at the Villa soon!



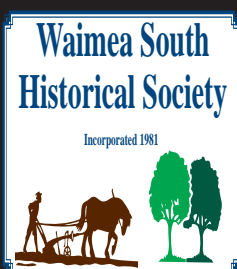
Dry Hire Spits, Meat Supplies and Catering



Smoke'n And Spits

027 299 0342

www.smokenandspits.com



Explore the past with us

www.waisouth.wordpress.com

Wakefield Health Centre

by Gavin Drummond

Flu Vaccinations and Covid Boosters

The colder mornings are a reminder that winter is on its way and with it comes the Flu Season. Your best defence against the flu is to get a yearly flu vaccine. Flu vaccines are available for anyone aged over 6 months.

People with the following conditions are eligible for a free vaccine:

1. Children aged 6 months to 12 years with chronic conditions
2. People 65 years of age or older.
3. Māori & Pacific peoples aged 55-64.

4. Refugee who have been through the quota programme 55yrs +.

5. People under 65 years of age who:
- have some types of cardiovascular disease;
 - have either of the following chronic respiratory diseases:
 - o asthma, if on a regular preventative therapy; or
 - o other chronic respiratory disease with impaired lung function; or
 - have diabetes; or
 - have chronic renal disease; or
 - have any cancer, excluding basal and squamous skin cancers if not invasive; or
 - pregnant women (any trimester); or
 - some other rare conditions may also be eligible

If you think you may be eligible, please discuss with one of our Nurses or Doctors.

Non funded flu vaccines will be available at the same time. FLUAD@Quad is a non-funded flu vaccine available to the over 65s. This vaccine has additional ingredients that helps create a stronger immune response.

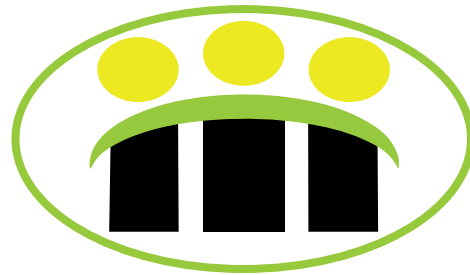
There is a new Covid vaccine available for people over 30 years that have not had a booster or covid illness for six months or more. This can also be used as a primary course for people who have never had a covid vaccine. Flu and covid vaccines can be safely given at the same time.

The nurses have several clinics coming up so give us a call and we can book you in.

Welcome Ancy

We are delighted to welcome Ancy to our Practice Nurse team, with all her experience and passion for helping people. She has written a couple of lines below about herself.

My name is Ancy, I have been a nurse for over nineteen years. I bring a diverse background in Nursing to contribute to the Wakefield Health Centre team. I am a proactive and adaptable professional who enjoys working with colleagues who are passionate about nursing care. I look forward to meeting many of you here at the Practice.



Wakefield Health Centre Surgery hours:

Monday to Friday 8.30am – 5:30pm
Wednesday 8.30am – 7pm

Phone 541 8911
12 Edward St Wakefield



Town and Country Vet

by Brenda Halliwell, Vet

Babesia Gibsoni

Recently this parasite has been in the news after it was discovered for the first time ever in NZ in a dog in Canterbury. *Babesia gibsoni* is common in other parts of the world including Australia and is spread by ticks, blood and pups can get it from their mums.

The problem is that the dog which was diagnosed with Babesiosis had not been overseas so it is not known how *Babesia* arrived here, yet. MPI is investigating and has tested the other dogs in the family as well as other dogs the affected dog had been in contact with. Vets in Canterbury and nationwide are on the alert and will be checking for *Babesia*.

The NZ cattle tick is capable of spreading *Babesia canis* but it could not have arrived into NZ on these ticks. *Babesia canis* is a protozoa (giardia and malaria are examples of protozoan diseases in people). It damages red blood cells causing anaemia in dogs. Some dogs have mild disease, others are obviously unwell. Unfortunately the dog in Canterbury was very unwell and was euthanased.

Hopefully *Babesia* is not here to stay but the best way of preventing your dog being exposed to *Babesia* is regular flea and tick prevention such as Bravecto and Nexgard. And avoiding dog fights so bites don't occur.

Do you have a skinny old cat?

If you answered 'yes' then read on.... many of our cats look thinner as they get older. This can be just the normal aging process where muscle mass is lost due to being less active (just like people). But if your cat is looking skinnier and skinnier, that's not normal! There are several common diseases that occur in older cats resulting in weight loss. These are:

- Hyperthyroidism (= over-active thyroid gland)
- Kidney disease
- Diabetes

These diseases can be managed and enable our pets to live a good quality life. But left untreated, older cats have a poor quality of life and are likely to be euthanased earlier.

All three diseases can be diagnosed quickly and easily with a blood test. And treatment can be as simple as popping a tablet into your pet's dinner. Some cases are more complicated however and require further tests and checkups along the way to keep your elderly cat well.

Unfortunately there are a lot of other diseases which cause cats to lose weight. Some can be treated with medicines or surgically, and others are untreatable. But it is much better for your pet to have a checkup so we can chat about treatment options and you can give your pet the best quality of life for as long as they have left.



"...for all creatures great & small..."

HOURS:

Monday 8.30 – 5.00 with Brenda consulting all day

Tuesday 8.30 – 5.00 with Brenda - morning consults only

Wednesday 8.30 – 12 Nurse only

Thursday 8.30 – 5.00 with Paula – morning consults only

Friday 8.30 – 12.00 Nurse only

Ph 541 8974

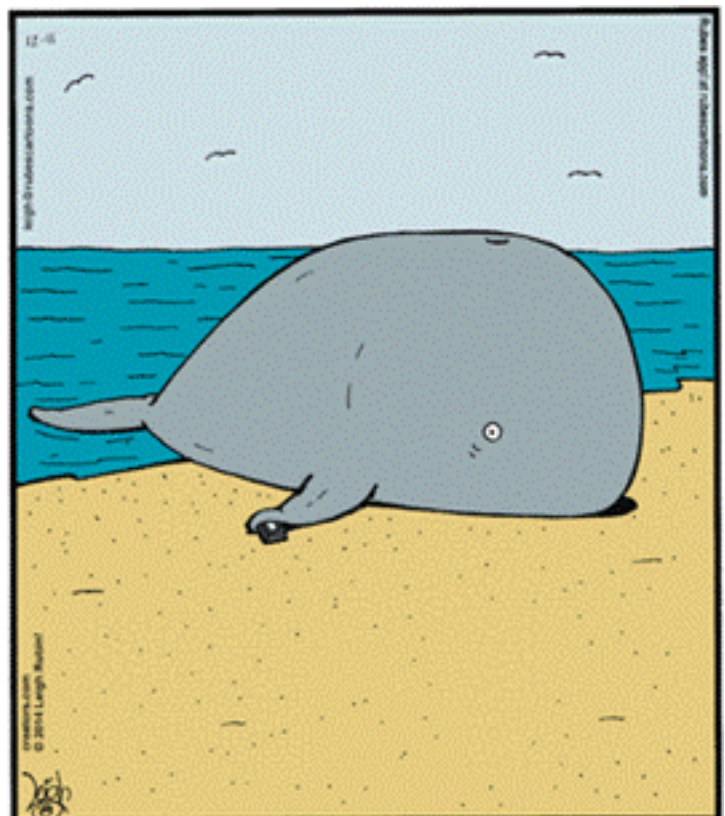
info@tcvet.co.nz * www.tcvet.co.nz

Edward Street, Wakefield

Head office 35 McGlashen Avenue, Richmond



544 1200 24 hours



One minute Walter was distractedly texting, and the next...

In the Bush

IN THE BUSH – Reporting In

You will remember in my last article, I was concerned about the BIG DRY, so with tongue in cheek we had to postpone our usual 2nd Saturday in April to the following Saturday due to rain.

And it was a good drop as we went and checked out our smallest Reserve (The Edward Baigent Memorial Scenic Reserve) to make sure that moisture was making it through the canopy to the ground below.

As Gowan and I had been concerned at the signs of stress being shown by all the trees in this area, particularly the Matriach Kahikatea's.

Our April maintenance day, saw us do a blitz around the extremities of the Faulkner Bush entrance way to the board walk. A very visual area for us with many walkers out and about, and so many compliments directed at our volunteers for the work we do. We will be there again in May, to finish off and as always SO many weeds and congratulations to Sally (Chocolate Fish coming) for locating some Chocolate Vine.

Thank goodness, as to my knowledge we have at this point in time, only located it at Faulkner Bush.

Chocolate vine is a fast-growing deciduous, twining vine or groundcover native to Central China, Korea and Japan. Originally brought to New Zealand as an ornamental garden vine it has now spread from home gardens into other areas of the region.

2024 PLANTINGS

We will start a **small** planting programme, to cover all Reserves, more to infill and check to replace where we have die back. Our Vice President Gowan, expressed a wish for more, Manuka to give colour etc.

SO Gowan, we have 25 for you to plant !!

Appreciation also to the South Family for providing the funds to purchase more natives from Titoki Native Nursery and their Manager Keith for giving such excellent service and advice.

Steve Hammond has also again given a fantastic gift to our Society with local native seeds that he propogates and through his generosity and the varieties provided, we are envisaging doing some spectacular “grove” plantings. When fully matured their colour and placement will certainly be a future talking point.

HUGE THANK YOU'S

It seems to be donation to our Society time, and I will cover these in more depth in our next news item.

Albeit I must say now, that these funds give us such a boost and allow us to plan more plantings/seating etc for our three Scenic Reserves.

One such event was David Chadwick of David Chadwick Photography (and we can “claim” him as a member), who did a photography for owners in a dog day at Robson's Scenic Reserve on the 7th April.

NO CHARGE for his effort and time but to ask should folks wish then to donate to a charity/good cause, and we are so very grateful that some did choose our Society.



LOVE FOR YOU TO JOIN US – 2nd Saturday of EACH MONTH

Kind regards Evie-joy South, and the volunteer team.

The Wakefield Bush Restoration Soc (2000) Inc –

Phone or Txt 027 907 2879 Landline 03 541 8980

Or **Email** tuiville@xtra.co.nz

Wakefield Community Toy Library

by Charlotte Thynne

Wakefield Community Toy Library has been extremely fortunate to receive grant funding through Lotteries. We used this funding to purchase new storage containers and bags to keep our toys protected and nicely presented. We are so lucky to have a team of volunteers who take the time to put in applications to these generous funding providers. Thank you all, amazing people!



Wakefield Playcentre

by Charlotte Thynne

Tuakana-Teina at Playcentre

Playcentre sessions are mixed age sessions with new borns through to age 5 years attending with parents or caregivers. As a parent attending Playcentre now with my youngest child, I so appreciate the opportunity my 3 year old has to be around and interact with babies and younger children. Children can learn so much from interacting with a range of ages in a supportive environment, its wonderful to see the friendship and care moments occurring between our different age groups.



All Accounts Matter ^{LTD}

For all your
accounting and
tax needs!



CHARTERED ACCOUNTANTS™
AUSTRALIA + NEW ZEALAND

GST | Tax Returns | Payroll
Bookkeeping | Cashflow Forecasting
Management Reporting
Rental Statements | Farm Accounts

ACCOUNTING SOFTWARE

myob

2020/2021
Certified
Consultant



Sonia Emerson
Chartered Accountant

Mobile: 021 221 1009 | Ph: 03 541 9005

sonia@allaccounts.co.nz

367 Wakefield-Kohatu Highway
RD1, Wakefield 7095

www.allaccounts.co.nz

WAKEFIELD PHARMACY

the caring pharmacy

STAY HEALTHY WITH BUCCALINE

When there's no time for sick days take Buccaline



The only natural active oral vaccine that gives 3 months protection against the bacterial complications of colds like:

TRUSTED FOR OVER
50
YEARS



3
MONTHS
PROTECTION

Join over 100,000 Kiwis already powering their immunity strength. Available in Pharmacies Nationwide.

Should not replace the flu vaccine for those at risk. Pharmacist-only medicine. Always read the label and use only as directed. If symptoms persist see your healthcare professional. Your pharmacist's advice is required. Pharmabroker Sales Ltd, Auckland. TAPS PP1899 REGISTERED PHARMACIST-ONLY MEDICINE

Shop hours -

Monday 8.30am to 5.30pm - Tuesday 8.30am to 5.30pm - Wednesday 8.30am to 6pm
Thursday 8.30am to 5.30pm - Friday 8.30am to 5.30pm - Saturday 10am to 12pm

4 Edward Street, Wakefield - Phone 03 541 8418 - Fax 03 541 9100

www.wakefieldpharmacy.co.nz

Pets Ever After

After Death Pet Care

Cremations

Memorials

Urns

Poster & Canvas Prints

Phone 027 247 8883

Locally owned and operated



www.petcremations.co.nz



SIX SIGNS OF BAD WHEEL ALIGNMENT



Vehicle pulling to the left or right



Vibration in the steering wheel



Uneven or rapid tyre wear



Steering wheel is crooked



Poor fuel economy



Unusual tyre noise when travelling



BENEFITS OF REGULAR WHEEL ALIGNMENTS



Increased fuel efficiency



Smoother driving



Improved vehicle safety



Extended tyre life



Reduced need for repairs

Has it been a while since your last alignment?

Give us a call and we'll make sure you're good to go.

STARTING FROM ONLY
\$85



Wakefield Auto Services Ltd

67 Whitby Road, Wakefield 7025
Phone 541 8121 www.wasl.co.nz



ENJOY THE JOURNEY CALTEX



Animal Health Partners



Complete care for your animals


Our committed veterinary team pride themselves on delivering optimal care with personal service.

Contact us for: Vaccinations • Health checks
• Premium food • Health plans for farm/production animals & more...

MOTUEKA 400D High St 03 528 8459	MĀPUA 69 Aranui Rd 03 540 2329	RICHMOND 79 Gladstone Rd 03 544 5566
---	---	---


vetlife.co.nz

VLA0006. Vetlife is a registered trademark - all rights reserved.



THE TINY HOUSE COMPANY

QUALITY AT A PRICE YOU CAN AFFORD



SIMON & ARRON WHITTAKER
027 541 8507 OR 027 541 8509
info@thetinyhousecompany.co.nz
thetinyhousecompany.co.nz

Pigeon Valley Wakefield

Wakefield Community Hub Draft Concept Design

Envision a space for you!

We would like to share the first draft concept design of what a community hub in Wakefield could look like! Come and view the plans, share your feedback, and help us create a space that truly serves our community's needs.




MAY 15TH - 7PM
Wakefield Village Hall

www.waimeasouth.org.nz
wakefieldcommunityhub



We invite you to



At the next
Wakefield Community Council Meeting

Monday 20th May 2024
7:00pm
Wakefield Village Hall

All are welcome

Live Well, Stay Well

Tuesday: 7 May and 11 June May Coffee and a Chat at The Villa in Wakefield 9.45am

Tuesday 21 May 2024 9.45am—11am

Speaker

Averil West

Heart Health Advocate for

Heart Foundation NZ

MY HEART CHECK

Venue: Wakefield Fire Brigade,

Pigeon Valley Road, Wakefield

**For information contact Sandra 027 6099202,
Sonja 027 3740500 or Christine 027 677 0080**



Delicious local honey

Mountain Valley Honey brings you award winning honeys, harvested from the beautiful Marlborough Sounds and stunning remote areas of the top of the South Island.

Our bees forage our region to bring you Mānuka, Native Bush, Autumn Gold, Kāmahi, Beech Honeydew, Rātā, Kānuka and Clover honey.

All our honeys are hand packed, with minimal processing from hive to honeypot, locking in flavour for you to enjoy.

Exquisite honeys to enchant your taste buds.

Visit us every Saturday at the Nelson Market.



Website: www.mountainvalleyhoney.co.nz

E-mail: info@mountainvalleyhoney.co.nz

Facebook: Mountain Valley Honey

Instagram: mountainvalleyhoney

Wakefield Bowling Club

by Terry Ryan

Bowls continues at Wakefield Bowling Club with our most recent tournament winners (Anne Curtis, Dale Smith and Caroline Wadsworth - Composite Team) receiving their prize money for winning the Triples event on 17th March. A smiling Club Chairperson, David Cartwright happy to present the prizes.

With winter almost here it is worth noting the bowls at Wakefield Bowling Club continues throughout the winter. There are regular tournaments on Wednesdays and the weekly club "roll ups" every Friday starting at 1pm. You don't have to be a member of the Club to join the Friday roll ups, just turn up with a smile and flat soled footwear and you're away!

On ANZAC DAY the Club commemorates those who served and gave their lives with an ANZAC DAY tournament. This has all the trimmings, we sound the Last Post and Reveille, an ANZAC address, food and then a popular and fun filled tournament.

This event is popular with bowlers in the region and has a full field. If you're in the area of the club come and join us, watch some great competition and smiles aplenty.

W



Armageddon Disc Golf Tournament 2024

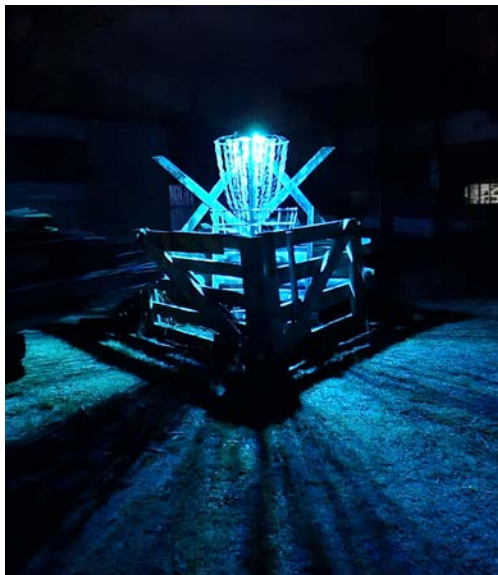
by Bo Hensley

The weekend of the 6th and 7th April was a busy one in the local disc golf scene. Not only was the annual Armageddon Disc Golf Tournament held at Redstone Golf Park, but it was also the final competition for the NZ Disc Golf Elite Series.

Players from across the country, including 3 US Pro disc golfers (Avery Jenkins, Maverick Robertson and Ella Hansen), gathered at Redstone for a practice day on Friday, before the commencement of 3 competitive 18 hole rounds over the weekend. Our visiting pros even hosted a coaching clinic - just in case anyone needed additional tips before the tournament!

For the first time ever in the NZ Disc Golf scene, the #1 tee off was from a 3m raised platform, courtesy of Advanced Access Solutions and from there discs had to pass through a triple Mando (think of a VERY large soccer post) before reaching the basket. The infamous dam swallowed its' fair share of discs; abandoned vehicles, in the City of Purgatory paintball field provided unexpected obstacles and flowing creeks made for muddy feet if your disc went astray.

The disc golf fun didn't stop there though. A challenging 9 hole putting course in the City of Purgatory, culminated in a fiercely fought final on Saturday evening. A Glow in the Dark Hole-in-One from the raised tee off saw a lucky Westcoaster walk off with an unexpected \$500 prize. There was even a skeet shooting opportunity...from 2000 paintballs shot, a mere 9 hit their target of flying discs!



Top of the South sunshine, good food, great company, striking, event specific Armageddon discs and awesome trophies, sealed this event as a highlight on the Elite Series and for disc golf in New Zealand.

Hayden Shore and his team from Disc Shop, together with local Nelsonian, Tom Strawbridge (assistant Tournament Director) once again showed NZ that, not only is the sport of disc golf growing in leaps and bounds across the country but the quality and competitiveness of our courses and players is increasing with every tournament.

We consider it a privilege to be part of this growing sport, with our very own permanent high-standard disc golf course here at Redstone, in Wakefield.

We're already looking forward to Armageddon 2025 with its' next round of disc golf surprises!

The weekend was sponsored by numerous companies, but we'd like to especially thank our locals for their support: Little Sprig (Wakefield) and all those who provided caravans as accommodation for the weekend.



Live Well Stay Well

by Christine Godfrey

The Live Well Stay Well group (on 23rd April) hosted Peter Verstappen at the Wakefield Fire Station. Peter came to talk about his adventures doing the South Island leg of the Te Araroa Trail. The whole trail from Cape Reinga to Bluff opened in 2014, is 3000kms long, but Peter wanted to revisit his old memories and haunts, and walk the trail (1300kms), from Ships Cove in the Marlborough Sounds down to Bluff. His wife Sylvia and two daughters joined him every so often on some sections.

He started walking on 3rd Jan 2023 and nearly missed the boat ride to start of Queen Charlotte Track. Rain and blisters were an issue. He came home for a few days for family reasons and then he picked up where he left off and tramped for 61 days, over 2.5 - 3 months.

Peter unpacked his pack (13-14kgs with food), to show us everything he needed to take with him. He wears Merino clothing, made by Sylvia and eats dehydrated meals made by her as well. He spent half the nights in his tent and half in DOC huts. 80% of people he met along the way were foreigners and offered great companionship. They filtered their drinking water but Peter didn't feel the need. He even gained a US pen pal and stays in contact.

The three complaints from overseas trampers are:

- * Sandflies
- * Wet feet from all the river crossings
- * Trails going straight up and over hills (no grades or switchbacks). Peter found walking poles a great asset, even after breaking one, found another one hanging by a hut. Some people from overseas would send a 'bounce box' of supplies by mail to a town nearby to stock up on food etc, which is a great idea.

Peter's longest day was 54kms (11 hours) from Tekapo to Twizel and seven days without a break was the longest stint. Sylvia did a total of 12 days with him. He finished the trail on 5th April. It certainly cleared his head, ready for his next adventure. Everyone enjoyed the presentation and seeing all the gear needed for such an expedition. Sandra thanked Peter with a gift.



Upcoming Meetings:

Tuesday 7 May 2024: coffee meeting at The Villa in Wakefield, 9.45am onwards

Tuesday 21 May 2024 9.45am : Talk by Averil West, heart health advocate for Heart Foundation NZ, speaking about My Heart Check.

Tuesday 11 June 2024: coffee meeting at The Villa in Wakefield, 9.45am onward

Live Well Stay Well is a local health and social group that meets twice a month in Wakefield. Our goal is to keep well and healthy, by encouraging good health practices and exercise, but also by having a positive social connection with others in our community. Maybe you are new to the area, or feeling a little isolated, and would like to meet and get to know others who live locally, within a friendly environment. Or would you like to learn more about our community? Then our group could be for you.

Our group meets twice a month in Wakefield, mostly on a Tuesday morning from 9.45am to 11am.

One Tuesday we will meet in a local café for a coffee and chat, and the other Tuesday we have a guest speaker focussing on health knowledge or who can help us understand and learn more about our community. This could also be a visit to a local business of interest. We aim to arrange a varied and interesting programme.

The group is run on an informal basis and there is no joining fee. However when we have a guest speaker or go out for a visit we do ask for a \$2 gold coin donation to help us cover the hire of the hall facilities and tea and coffee and/or a small gift for our speaker.

We advertise our programme in "Window on Wakefield", your local news magazine, plus on the Community noticeboard in Wakefield. We also communicate what is happening each month by an email group.

You are very welcome to join us. We would love to meet you!



If you would like to be on email list, please contact one of the convenors.

Sandra 027 609 9202, Sonja 027 374 0500,
Christine 027 677 0080 or Deborah 021 303 515



Wakefield ELECTRICAL LTD

We Do All Electrical Work (incl. Caravans WoEFs)
Andrew Smith - Electrician/Inspector
 Est. 2013

03 541 8797 - 027 441 8797

"Your Local Electrician"



Golf Disc Golf Paintball Licensed Cafe





Family Fun for All
Redstone Golf Park & Armageddon Paintball
334 Wai-Iti Valley Rd, Wakefield

f Tel: 03 541 8452 / 027 448 9367 **Instagram**
[redstonegolfpark.co.nz / armageddonpaintball.nz](http://redstonegolfpark.co.nz/armageddonpaintball.nz)



Tasman Bay Chiropractic
 Open six days 64 Oxford St, Richmond

Referrals, families and all new patients welcome



FOUR chiropractors now available
 Visit our website or call us **03 544 4554**
tasmanbaychiropractic.co.nz Find us on **f Instagram**

Keeping you in the game since 2002

FENCE WORX

FOXHILL

- Rural and Residential Fencing • Decks •
- Sheds • Pergolas • Retaining Walls •

Call or email today for a free quote
021 193 6331
info@fenceworxfoxhill.com
www.fenceworxfoxhill.com




Nelson Travel Broker
 your journey starts here
locally Owned & Operated

Phone: 03 541 8417 or 021 545 799
 Email: sue@nelsontravelbroker.co.nz

Check out what my clients have to say at
www.nelsontravelbroker.co.nz

A proud member of Travel Connections NZ Limited. **TAANZ**

all about you
BEAUTY THERAPY

Services include
 Skin treatments, Spray Tanning,
 Waxing, Tinting, Manicures and Pedicures
 Enquire about group bookings for a girly catchup
 Gift vouchers available
 By appointment only
 Come and relax at the salon that is....
all about you

f 103 Wakefield-Kohatu Highway
www.allaboutyoubeauty.co.nz
 Mobile: 027 6143 298

Higgins Heritage Park Happenings

by David Win

The Rural Resilience Expo combined with our open day and an extra traction engine steam-up, with food and ice cream proved to be a really great day out. The great displays of the exhibitors demonstrated the wide number of resources available in our Nelson Tasman district.

With autumn colours, and leaves everywhere, May is our time for housekeeping in preparation for any inclement winter weather, like making sure gutters are clear and other ground and driveway maintenance. Our traction engine will have its last run for the 'season' on Sunday 5th May before it has its annual winter maintenance.

Over the years Rex, our forestry guru, has developed the chainsaw collection, John Ward Memorial Hut, Loggers Dream machine, past logging day events, the honey barrel rides and the fund raiser firewood project.

www.higginsheritagepark.co.nz

Email: info@higginsheritagepark.co.nz

Follow us on Facebook



Waimea South Historical Society

by Yo Tye, Secretary

The Costellos purchased the property in 1978 from the Marusich family who had owned it for the previous 25 years. Ivan John Marusich had grown tobacco and yams on the small farm. After his death, in 1969, Mrs Marusich, Ivy Ines, lived for a time with their daughter, Ina Lorraine, in the house but no maintenance was ever carried out. Ivy died in 1977 and after a six month wait for probate to be completed, Phil and Rachel were able to purchase the property by auction but by then the electricity and water supply had been disconnected and the buildings, including the house, were very run down. After deciding to restore the house, they put down another water-well closer to the house. The Wakefield Fire Brigade burnt down all the other old buildings. Unfortunately the fire got out of control and also burnt the paddocks and fences.

The district, now known as Wai-iti, was originally called Upper Wakefield. Several businesses operated from here, including Hodgson's boot and shoe store that also sold groceries. The Hodgson's along with several other businesses in Upper Wakefield, moved to Wakefield village after the railways had built a station there, and Mr Hingston took over the store which was situated near the entrance to the Villa Grove. Later still Francis Waterhouse purchased the store. His grandparents, Thomas and Sarah Waterhouse, had arrived in Nelson on the Martha Ridgeway in 1942.

It took Phil and Rachel two years to complete the house renovations. During this process, the remains of another house was discovered underneath the floor boards and it is thought that these were part of John and Ann Hodgson's original house.

Rachel and Phil had placed a very informative information board in the tasting room and photos of this original old house were displayed as well as the current house before they began the renovations. The house is thought to have been built around 1882 when Francis Waterhouse married. Also on display were photos of the original Hodgson's store and copies of the old Certificates of Title.

During the renovation phase Phil and Rachel erected a large green house and grew flowers and flower tubers for the Japanese market. In 2005 they sold this business. They planted an olive grove in 1995. It took five years for the first commercial crop to mature and now, after 20 years of successful production, they have identified which varieties are most suitable for their soils. The season finishes in the May-June period.

The Olive Press used to process the crop is situated in Redwood Valley and modern techniques mean that one tractor with a tree clamp can shake the ripe olives off onto an umbrella type structure that encloses the tree. They are then taken to the press and processed within 24 hours. The oil is then pumped into a tank to decant and only needs to be filtered if it is cloudy. After it is bottled the oil is brought back to Villa Grove for labelling and sales. Sales can be made on the premises, or purchased from several local outlets such as Connings, Mapua Fruit and veggies, the Suter, Wakefield Auto Services and South Fuels in Spring Grove, as well as online purchases via their website.

As an added piece of interesting history, Phil was able to inform us that his great grandparents came to New Zealand from Ireland aboard the Edwin Fox, which can now be seen at the Picton Wharf where it is being restored. Kathleen was able to share some interesting information about this ship. The Costello surname had been anglicised to CUSHLEY on the ship's records. The family settled in Marlborough before Phil's grandfather moved to Nelson where he became a publican. His Uncle Eric Costello was once the proprietor of the Foxhill Hotel.

The afternoon gathering was a wonderful combination of old local history and new history in the making which made for a fascinating event that included Olive Oil tasting and the chance to purchase bottles of the delicious oil for ourselves.

A big thank you goes out to Rachel and Phil for the effort they made to make this day so enjoyable.

Waimea Sheep Dog Trial Club

by Sally Powell

The Waimea Sheep Dog Trial Club held its 103rd annual event on 19th-20th April with a massive turnout of spectators to watch all four events. The recent rain had put a green tinge on what had been drought stricken paddocks and landowners Peter Brown, Hilton Hodgkinson and Norm and Vicky Johnston were generous as ever with access to their properties.

Competitors from as far away as North Canterbury made the trip, hunting points to qualify for the South Island championships to be held in Blenheim 4-11th May. Graham Sidey's Patch and Ken White's Zak both earned qualifying points in Event Two which allow them to progress to that competition.

Standout visitor was Toni Blundell who won event two with her heading dog Kaz and also placed in both huntaway courses with her dog Django.

The best local heading dogs were Alistair Eggers' Moss, Sean McNamara's George, Mandy Herbert's Rose and Tom Curnow's Rose. Between them they cleaned up the local maiden and intermediate prize money for both heading events, leaving room only for Russell Lawrence with Tui in event one.

The keenly contested local Huntaway money was a battle between Sean McNamara's Quinn and Hilton Hodgkinson with Gus and Luke although David Meade robbed them of first place in Event 3 with his dog Jade.

It was a real community day out with many families enjoying the sausage sizzle and the fine weather. The club would like to thank all our generous sponsors for making the day such a success.

For full results and photos, view the Waimea and Tapawera Sheep Dog Clubs Facebook page.



"...for all creatures great & small..."

HOURS:

Monday 8.30 – 5.00 with Brenda consulting all day

Tuesday 8.30 – 5.00 with Brenda - morning consults only

Wednesday 8.30 – 12 Nurse only

Thursday 8.30 – 5.00 with Paula – morning consults only

Friday 8.30 – 12.00 Nurse only

Ph 541 8974

info@tcvet.co.nz * www.tcvet.co.nz

Edward Street, Wakefield

Head office 35 McGlashen Avenue, Richmond



544 1200 24 hours

Shone & Shirley

FUNERAL DIRECTORS

EST 1862

FAMILY OWNED & OPERATED



Shone & Shirley was Nelson's first funeral home, established in 1862. Today we offer our modern chapel facilities which seats 160 people and we also have space for a more intimate service.

Alternatively, you may have a special place where you would like to hold your loved one's ceremony, be it at home, in a garden, at the graveside or some other venue of your choice.

You are welcome to meet our staff and inspect our premises at any time. Simply call us on 03 546 5700 to make an appointment.

Our family caring for your family

03 546 5700 - 24 hours

shoneandshirley.co.nz



Psst!

Have You

Heard?

More and more locals are choosing **Ed Thynne Hearing.**

"After trying hearing aids many years ago, which didn't work, I was amazed at the difference hearing aids from Ed made. Sound was rich and full without being overwhelming"

-Peter, Tasman

Visiting Wakefield Health Centre fortnightly



Call: 03 526 8221

Email: ed@edthynnehearing.co.nz

Web: edthynnehearing.co.nz



Proudly 100% Kiwi owned and operated

Community Notices

HEART FOUNDATION

The Heart Foundation would like to raise awareness within our community of upcoming Heart Health Information sessions.

In May they are offering

May 7

All about Atrial Fibrillation

Speaker: Niall Foley, cardiologist

Venue: Methodist Church, Neale Ave, Stoke
10.30 – 12.00

May 14

Aortic Stenosis

Speaker: Rebecca Eddington, cardiac nurse specialist

Venue: Age Concern, 62 Oxford St, Richmond
10.30 – 12.00

These are offered periodically, to help people learn more about their heart conditions or interventions. They are led by a specialist ie cardiologist, cardiac nurse specialist, nutritionist, pharmacist etc.

Waimea South Historical Society

Incorporated 1981



- Knowing the past
- Understanding the present

Annual General Meeting

Will be held at the Holy Trinity Church Hall
27 Dorset St Richmond on
Tuesday May 28 at 1.30pm.
You are welcome to attend.



Christeen Mackenzie, one of our TDC councillors for this area, will talk on our Historical Society's relationship with the TDC, the re-naming of Belfit Lane here in Wakefield and the possible impact of the proposed 'fast tracking' of Resource Consents in the absence of a TDC Heritage Advisor.

Spring Grove Church of Christ

Main Road, Spring Grove
Worship and Communion Sundays 10am
You are welcome to attend

"No Greater Love"

"Greater love has no one than this:
to lay down one's life for one's friends."

John Ch 15 v 13 NIV



Community Classifieds

WANTED

Limes
Phone Christine 027 856 6681

March

WANTED

Galvanised pipes, will pay metal price
Phone Christine 027 856 6681

March

FOR SALE

Hyline Brown pullets available at 10 weeks
old May 18-19th in Wakefield. Excellent
layers. Order soon so you don't miss out.
Phone 0211680324

April

FOR SALE

Metal Bunks \$150
Ph 021 0817 9481

April

WANTED

Old straw or hay for mulching. Prefer straw,
organic and baled, near Wakefield, but will
consider all. We can uplift.
Phone 03 541 8832.

April

MEALS ON WHEELS - DRIVERS WANTED

We are needing a driver to deliver meals on
alternate Tuesdays, Thursdays and Fridays.

Meals are picked up from The Homestead Rest Home in Wakefield at 11am,
and delivered to folks in the Belgrove to Brightwater area, and possibly Richmond.

This usually takes approximately 1 ½ to 2 hours.
This service enables elderly and unwell people to remain in their homes longer.

We could also do with some relief drivers to fill in on a casual basis.
If you would like to help, please phone Heather on 5418151.



Wakefield Bush Restoration Society Inc

Are you passionate about native flora and fauna?
Do you value local scenic reserves?

Join the Wakefield Bush Restoration Society (2000)
Inc,

Help maintain our beautiful scenic reserves.
Tasks include everything from planting and weeding
to general maintenance.

We meet every 2nd Saturday of the month, or as required to help
beautify our scenic reserves.

You would be most welcome to join us.

There is always a fantastic morning tea provided too.

Please contact Kerstin 022 457 6879

WAKEFIELD COTTAGE SHORT TERM RENTAL

Mid April to Mid October 2024

Cottage suitable for a couple or young family.

Two spacious bedrooms, full kitchen,
bathroom and laundry.

FULLY FURNISHED
PHONE 027 5418241

Wakefield Craft Group


Come and join the ladies Craft Group
held on Wednesday mornings
in the Fire Brigade Supper Room
Pigeon Valley Road
9.00am - 12pm

Bring any project - sewing, knitting, crochet.
Learn to knit or crochet or just come for a look
and join us for tea, coffee and company.
Small donation

For more information phone Judy on 5418342



An enthusiastic & supportive group exchanging ideas

Wakefield Village Hall



THURSDAY 9.30 am-noon

Bring your Pencils, Paint & Pastels

\$4 donation per session

Everyone Welcome. All levels of interest

For more information checkout Wakefield Website

<https://www.wakefield.org.nz> Clubs & Societies

Community Directory

Rutherford Memorial Hall
658 Wakefield-Kohatu Highway, Foxhill
Sue White 027 474 6324
www.lordrutherfordhall.org.nz

Higgins Heritage Park
Secretary: David Win 027 631 6786
info@higginsheritagepark.co.nz

Higgins Park Community Fair
David & Diane Win 544 7096
info@higginsheritagepark.co.nz

Rural Ramblers
Carolyn Mason 541 9200

Spring Grove Drill Hall
C Stratford 542 3992

Totaradale Golf Club
Sue James 541 8030 totaradalegc@gmail.com

Wakefield Anglican Church
St Johns on the hill
Traditional Service: 9.00am
1st & 3rd Sunday of each month
The Worship Centre
Informal Service: 10.30am every Sunday
Ph 541 8883 wakefieldanglican@xtra.co.nz

St Johns Worship Centre
Bookings Nigel Massey 027 243 1207

Wakefield Community Library
Wendy Gibbs 541 8490
Pam Dick 541 8392
Hours - Tues 10.30 -11.30am
Friday - 2.30 - 4pm
(When library is not open book returns
can be left at Hair Raisers Salon)

Wakefield Football Club (Seniors)
wakefieldfootballclub@gmail.com

Waimea Plains Football Club (Juniors)
waimeaplainsfootballclub@gmail.com

Wakefield Medical Centre
541 8911

Wakefield Pharmacy
541 8418

Wakefield Playcentre
Contact: 027 880 2800

Wakefield Volunteer Fire Brigade
CFO Blair Hall 027 405 4280
DCFO Dot Ashton 027 543 0529

Willowbank Heritage Village
willowbank2002@gmail.com

Country Players (Drama)
Jen Amosa 541 8139
enquiries@countryplayers.org.nz
www.countryplayers.wordpress.com

**Nelson Vintage Engine &
Machinery Club**
Allan 027 319 7427

Pinegrove Kindergarten
03 542 3447

Rural Women
Diane Higgins 03 542 4388

St Joseph's Catholic Church
Mass - 2nd Saturday each month
Parish Priest Seth Pijfers 544 8987

Taoist Tai Chi
Deb Knapp 022 083 9332

Waimea Sheepdog Trial Club
Sally Powell 021 773 461
Email: sally@tcvet.co.nz

Waimea Area Quilters
Kay Norgate 021 0811 4860
Marilyn Gibbs 03 541 8435
marilyn.gibbs72@gmail.com

Wakefield Book Group
Mahala White - 541 8933 or
Chrissy Harris - 541 9596

Wakefield Bush Restoration Soc Inc
Evie South 541 8980 or 027 907 2879

Plunket Nelson Area Office
For appointments etc 539 5200

**Wakefield School/ Community
Swimming Pool**
Karyn Young 021 112 4203
Libby Thomson 027 541 8202

Target Shooting Wakefield
targetshootingwakefield@gmail.com
Holly Gibbons 022 406 1674

Wanderers Sports Club
027 714 6160
jimmy@wandererssports.co.nz

Wakefield Toy Library
Saturday 9.30-11.30am
wakefieldtoylibrary@gmail.com

Wakefield Art Group
Thursdays 9.30am - 12pm
Alison 541 8822

**Marlborough Nelson Marine
Radio Assn**
Adrian Mullan 021 118 4832
www.mmr.org.nz

NZ Postcard Society Inc
Evie South 541 8980 or 027 907 2879

Richmond Lions - Wakefield Rep
Sue Burrowes 541 9689 or 027 364 0773

Spring Grove Church of Christ
Meet Sundays 10am
info.springgrovechurch@gmail.com

Waimea South Historical Society
Yvonne Tye 021 542 338

Wakefield Bowling Club
Phone club rooms on 541 8556
(Please leave message if
answerphone comes on).
www.wakefieldbowls.co.nz

Wakefield Brightwater Book Club
Sue McAuley 544 7325
sue.mcauley@ncc.govt.nz
Meets last Wed of every month

Wakefield Community Council
Julian Eggers 027 771 8556
eggers213@gmail.com

Wakefield Preschool
Contact: 541 8086

Wakefield School PTA
ptawakefield@gmail.com

Wakefield Tennis Club
Ngairie Calder 027 279 9938
www.caldertennis.co.nz

Wakefield Village Hall
Amby Cowe
ambynz@hotmail.com
541 8869

Window on Wakefield
Articles & Content - 541 9005
Sonia Emerson

Window on Wakefield
Advertising - 541 9641
Genie & Lindsay Bradley

Wakefield School
Edward Street 541 8332

Justice of the Peace
Katie Greer
Ph 021 547 756

AED DEFIBRILLATOR LOCATIONS - AVAILABLE 24/7

Wakefield Four Square, Wakefield Bowling Club, Wakefield Football Club, Highfield Farm, Kohatu Flat Rock Cafe, Old Tadmor Store, Dovedale Hall, 29 Moonlight Road Glenhope, Corner of Totara View Road and Kilkenny Place, Corner of Martin Ave and Lord Auckland Road, Southfuels Spring Grove, Belgrove Cafe and Bar [what was], Lake Rotoiti Fire Station, Golden Downs Golf Club, Totaradale Golf Club.

CIVIL DEFENCE - WAKEFIELD AREA COMMUNITY RESPONSE

In the event of an emergency, your first task is to ensure the safety of your own home, family and neighbours. Once you have attended to this, if you have **specialised skills/ equipment**, and/or feel you can assist others; or require assistance yourself, please make your way to the Welfare Centre which will be at the St Johns Worship Centre in Edward Street [unless notified otherwise].

Please note that the existence of a Welfare Centre does not absolve each individual from their **responsibility to be personally prepared**. You should ensure that you have your own **survival kit** in place, and that you are able to be **fully self sufficient for at least three days**.

In the event of an emergency, for urgent public messages, tune in to:
More FM 94.1, Classic Hits 89.8, Fresh FM 95.4





Local Knowledge

Local Experience

Proven Success

Fees That Represent Value

**Proudly
Supporting
the
Wakefield
Community
since
2007**



Wendy Pearson

Owner and
Sales Consultant

021 567 722



Sarah Robb

Sales Consultant and
Technology Manager

0278821994