



window on wakefield

Your Local News

Community News for the Wakefield Area

Why Not Wakefield?

by Bo Hensley

Wakefield's first 'Why Not Wakefield' weekend was held on the 31st August - 1st September 2024. It was a significant way to celebrate not only the first of spring and Father's Day but also the start of the summer open days for a number of the attractions in the area.

The idea for the weekend was initiated by Michael Meissner (The Villa) and Bo Hensley (Armageddon Paintball) who had each attended a Local Ambassador workshop hosted by the Nelson Regional Development Agency (NRDA). The challenge at this workshop was to know what other hospitality, activity and tourism businesses our local areas offered, so as to be able to refer visitors to them. By doing so, visitors would discover even more than they had originally thought there was to do in an area and local businesses would benefit from the increased patronage and wider exposure to each of their businesses. Long term this could lead to an increase in local spending and improved employment opportunities, to say nothing of the 'buzz' created around the village.



Twelve local business owners came together for an initial brainstorm of ideas and from this the Why Not Wakefield weekend was born. Rawinia Grieder (Ake Creatives) used her talents to pull together a flyer containing a great deal of information about what was on offer and Wendy Pearson (Welcome Real Estate) generously sponsored advertisements in both the Waimea Weekly and Window on Wakefield. As an incentive, visitors were encouraged to bring along their flyers, collect three stamps from participating businesses and go into the draw for a substantial local business prize which included accommodation at Oka Cottage.

A glorious spring day of sunshine brought people out, especially on the 1st September and there was certainly a lot going on over the day in the area. Live music was played at no less than three venues, there was a wide range of food options to choose from and the classic car show at Higgins was a big draw card for dads. Fruit ice creams, a discussion with local historians and artists, a wander around the Historical Village and a Gellyball shootout - there was certainly something for everyone going on! Wakefield is fortunate to have a number of active clubs that were also able to showcase their talents over the weekend. Ms Wendy M from Nelson was the lucky winner of our prize pack and she was overwhelmed with everyone's generosity. She admitted it was the first prize she'd ever won in her life!

Trying something new is always a little daunting and certainly affords an opportunity to reflect on what worked well and what could be improved upon for future events. If one considers the original aim of the weekend, to showcase and network between local businesses, we would consider this weekend a great success. By connecting business owners and working together, piggy backing off each other, we would like to think that Wakefield is well set up for a successful summer. I am often astounded by the number of diverse businesses we have in the immediate area and wonder if we know how lucky we are to have these on our doorstep. How many of them have you visited?

An enormous thanks goes to the businesses and clubs who supported the weekend, whether it be by opening their doors, or providing prizes: Welcome Real Estate, Ake Creative, The Villa, Higgins Steam Museum, Willowbank Historical Village, Totaradale Golf Course, Redstone and Golf and Disc Golf Park, Wakefield Hotel, Washington Street Food, South Fuels, Pennylane Plants, Sunrise Coffee Shack, Brookside Nursery, Dark Sky Park, Armageddon Paintball, Fairfield Berries, Make a Knife, Little Sprig, Waimea South Historical Society, Oka Cottage, Wakefield Bakery, Wakefield Art Group, St Johns Church, Spring Grove Church, Sweet Treats by Natalie, Wild Oats Farm and the Big Bake Up.



WINDOW ON WAKEFIELD

How it works...

Window on Wakefield is produced and published by Waimea South Community Facility Charitable Trust. All businesses advertising in this publication incur a cost for the advertising space allocated, depending on the size and location of the advertisement. The funds raised from this advertising are used to cover the costs of printing Window on Wakefield. No parties are paid for the time involved with editing, coordinating and publishing this paper. It is the intention that if surplus funds are raised from advertising, that these will be held to be used for other community projects. The bank reconciliations and financial reports related to this account will be made available to any person who wishes to view them.

Content...

Window on Wakefield is a community newspaper, and as such, we look forward to having articles and content contributed by our community. If you wish to submit a one off article, or suggest some regular content, please make contact with Sonia on 541 9005 or email windowonwakefield@gmail.com and read the Terms and Conditions below.

We try to ensure information published is truthful and accurate, but do not check the facts of the articles and therefore cannot attest to their validity. While all reasonable care is exercised, we do not accept liability for any loss whatsoever incurred through our errors, acts or omissions in relation to the content of an article, or for any consequences of readers relying on the information published. Opinions expressed by contributors do not necessarily represent the views of the Waimea South Community Facility Charitable Trust, nor are they necessarily endorsed by the Editor or Publisher.

Advertising...

If your business wishes to advertise in Window on Wakefield, please make contact with Genie on 027 306 4237 or email info@promoteyou.co.nz and a rate card will be sent.

TERMS AND CONDITIONS REGARDING PUBLISHING OF CONTENT

- a. All articles and other content submitted for publishing must disclose the author's name or where the article/content is contributed by a community group, then that community group's name.
- b. All images should be provided to us in a high quality PDF format. We take no responsibility for the quality of reproduction for images that are not supplied to us in this format.
- c. If you wish to make changes to an article or content already submitted, please ensure these are communicated to us before the relevant deadline date.
- d. When you submit an article or other content for publishing you:
 - agree that the submitted material and/or images can be reproduced by the Editor or Publisher at any time without your prior approval
 - agree that all photographs submitted for publishing are provided free of charge, and the approval to print has been obtained from any persons shown in the photo - this is the responsibility of the person submitting the photo
 - acknowledge that all material is held by us at your risk and is not insured by us. Material will only be returned on request and may otherwise be destroyed by us
 - warrant and undertake that no statement, image, representation or information contained in your supplied article or content:
 - * is or is likely to be misleading or deceptive;
 - * is at all defamatory, in breach of copyright, trademark or other intellectual or industrial property right;
 - * is otherwise in breach of the Copyright Act 1994, Defamation Act 1992, or any provision of any Statute, Regulation or rule of law.
- e. We reserve the right to decline the publication of any article or any content whatsoever on any grounds that we in our absolute discretion see fit.



Jill O'Brien

R D 1 Wakefield
Rural Mail Contractor
**FOR ALL YOUR
MAIL NEEDS**

Stamps, Parcels, Freight
Phone 541 8963
Mobile 027 324 2126

**DID YOUR BUSINESS
MISS OUT THIS TIME**



**DON'T DESPAIR
WE HAVE SAVED
A SPOT FOR THE NEXT
PUBLICATION
JUST FOR YOUR BUSINESS**

Give us a call
027 306 4237
or
Email
info@promoteyou.co.nz

NEXT EDITION

We do our best to have it out the first full week of each month
All Advertising to be submitted by the 20th of the Month prior
All Content to be submitted by the **23rd** of the Month prior
For Advertising please contact Promote You 027 306 4237



For Content please contact All Accounts Matter Ltd 541 9005 or 03 541 9055 if calling from a cellphone



The Big Bake Up

by Melissa Woodhouse

Thanks to those who came along to our pop-up cafe that was located at Wakefield School the weekend of the Quilt Show. Wow, what a huge success it was, with our team run off their feet.

We would like to firstly thank the Waimea Area Quilters for inviting us along, and to Wakefield School for being so accommodating and allowing us to use your amazing new kitchen and also for the use of your eftpos machine.

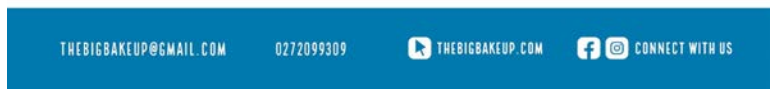
Ewing Poultry for a supply of eggs for our sandwich making, and our many bakers for your delicious treats that were all extremely popular. The weekend raised our charity \$2400, which is an amazing result.

This month in the kitchen we have made spaghetti meatballs (rolling 1000 meatballs is no easy feat) and sausages in gravy, with mashed spud and peas.

Our business sponsor for this month is Woodlot Harvesting, thanks to Lisa and Brad for supporting the work we do.

Keep reaching out, if you know of someone needing support or would like to help out in some way, send us an email.

Follow us on facebook or Instagram
www.thebigbakeup.com
Email thebigbakeup@gmail.com or
Phone 0272099309



Waimea Dog Trial Club

by Sally Powell

Waimea Sheep Dog Trial Club recently had several members compete at the Tux Yarding event, held at Richmond Brook in Blenheim. Congratulations to Ali Eggers whose dog West came first in the maiden handy dog section.

In conjunction with the Tapawera Dog Trial Club, preparations are under way for the annual Wendy Pearson Welcome Real Estate trial at the Nelson A and P Show on Saturday 23rd of November. Competitors will compete for both the Ernie Pauling Memorial Trophy and for the Governor General's Crook. Wendy has been a long-term sponsor of this event and the club is very grateful for her continuing support.

Apologies for mentioning Christmas this early but WSDTC is selling Christmas wrapping as a fundraiser in the run up to the festive season. Super cute pictures of dogs in Santa hats and scarves (can you see your favourite breed?) on an emerald green background. The paper is high-quality 80gsm European gloss paper so your presents won't show through. 50cm wide, 3m rolls for \$10 and funds raised will go towards running our club trial in April.

Show you are a dog lover this Christmas and support a good cause at the same time!
Contact sally@tcvet.co.nz to order and get in the festive spirit early.



Town and Country Vet

by Brenda Halliwell, Vet

Grass Seeds and Your Dog

It's approaching the time of year when we get lots of calls about dogs with a sore between their toes which they won't stop licking. If it's a small weepy hole, it's likely to be caused by a grass seed. Seeds might be small but when they penetrate into the skin they can become incredibly painful for your pooch.

Unfortunately grass seeds are a really common occurrence in spring and summer when the grass is longer and drier and you're getting out with your pet enjoying nice weather. Fluffy breeds such as schnauzers, spaniels and poodles and all their crosses are especially at risk.

Once a grass seed is attached to your dog they can only move one direction due to their barbs and they often bury into the fur and into your dog. It might sound hard to believe but grass seeds that get under the skin can travel through the body and end up anywhere including in the chest and lungs. This can take several months to years. Fortunately we usually find them before this happens!

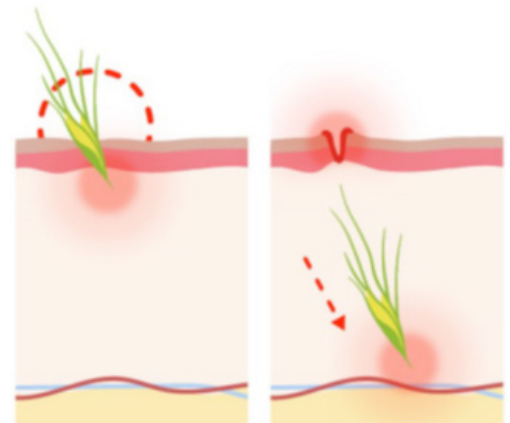
If you find a seed that has not fully embedded in the skin, remove it but keep a close eye for any ongoing irritation. If it's buried in the skin, a vet visit will be required. Sedation or anaesthetic is needed to go looking for a grass seed once it's under the skin.



Sometimes they have moved several centimetres deeper away from the hole and they can be difficult to find. All dogs need some combination of pain relief, antibiotics, bandaging and Elizabethan collars.

The only way to completely avoid grass seed problems is to not let your dog run around in long grass (mowed green grass is ok). But if this is not practical or possible the next best prevention option is checking your dog for grass seeds after each walk and/or giving them a good brush.

This might sound tedious but it's a lot easier to find a grass seed on the outer coat than when it's hidden by fur or buried in your dog.



"...for all creatures great & small..."

HOURS:

Monday 8.30 – 5.00 with Brenda consulting all day

Tuesday 8.30 – 5.00 with Brenda - morning consults only

Wednesday 8.30 – 12 Nurse only

Thursday 8.30 – 5.00 with Paula – morning consults only

Friday 8.30 – 12.00 Nurse only

Ph 541 8974

info@tcvet.co.nz * www.tcvet.co.nz

Edward Street, Wakefield

Head office 35 McGlashen Avenue, Richmond

544 1200 24 hours



When checking your dog for grass seeds, areas to focus on are:

- Paws, this is the most common place that we see them, they often appear as a raised red lump between toes and your pet will excessively lick
- Ears, sudden shaking of head after exercise and often very painful if you rub their ears
- Armpits
- Eyes, any discomfort, excessive blinking, inflammation and pawing at eyes

Fireworks

A quick reminder that Guy Fawkes is coming up. If you have a pet that needs extra help to keep calm around fireworks season, remember to get advice and help early as some behaviour tips and medications are more effective when started ahead of time.

Warm, dry, energy efficient homes

With 30+years of experience, Jason crafts bespoke homes with superior insulation, ventilation, and durability, ensuring both beauty and functionality.

021 167 3803
kernowdesign.nz



WAKEFIELD QUARRY

Drainage metal : Hard fill : Basecourse 70mm : Topcourse 40mm & 20mm
Landscape rock : Lime

**Sorry no more trailers or utes may be loaded because of the safety risk.
We do have a 2.5t tiptruck available.**



566 Church Valley Road, Wakefield Ph: 5419093 Mon - Fri 7.30am - 5pm

**FIX UP
SET UP
BACK UP
CLEAN UP
TABLETS &
COMPUTERS**

**mObile
cOmputing**

In Nelson
since
1997

**548 1787
027 224 0955**

Fran's the Man!
fran@mobilecomputing.co.nz
Still no call-out fee &
we still come to you.

Easy Life hypnosis

Weight Loss
Virtual Gastric Band

Are you wanting to improve your health?
Been struggling with those extra kilos for too long and sick of it?

No Dieting, No Surgery!

Proven program for Easy WeightLoss & Life changing.

BOOK NOW...
www.easylifehypnosis.co.nz
021 129 2249



Angel Esvella
Clinical Hypnotherapist
DipAdvhypno, MIHPS, NZHRB.

5272KiddesLife

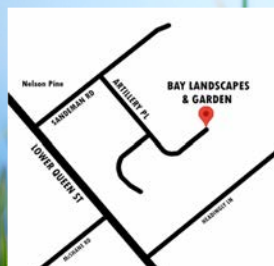


- *Arborist work
- *Tree felling
- *Hedge trimming
- *Tree stump removal
- *Wood chipping
- *Planting and re vegetation projects
- *And much more green care of your property

This is done by a trained arborist and nurseryman with many years of experience in plant production and the landscape business

Full insurance cover while all work is being done
contact **MORTEN** for a free quote
Ph: 021 206 9914 or 541 86 85
email: mortenlausen@gmail.com
www.nelsonlandscaping.co.nz
www.facebook.com/supergreencare/

Bay Landscapes & Garden Centre



- Topsoil
- Compost
- Potting mix
- Gravel
- Rocks
- Bark
- Fertilisers
- Pavers
- Vegetable Seedlings
- Shrubs
- Perennials
- Natives
- Fruit Trees
- So much more!
- Locally bought, grown, made, and sourced.

Open 7 Days. Courtesy trailers and deliveries available.

38 Artillery Place, Richmond

Ph: 03 5442 076

Email: office@baylandscapes.co.nz

www.baylandscapes.co.nz

Live Well Stay Well

by Christine Godfrey

On 24th September Jazz Danis came to talk to Live Well Stay Well about Natureland, at Tahunanui Beach, which is Nelson's wildlife conservation and education centre. Jazz is the Community Outreach Officer and enthusiastic ambassador. She came in the Natureland van which was painted up with Tuatara and various native birds. She brought lots of native branches and flowers and flax leaves so we could make 'enrichment parcels' for the animals, which include Meerkats and birds and six Capuchin monkeys (the most dominant one being Georgina). Some ladies wrapped up flowers in newspaper to look like xmas crackers, others lined hanging baskets with cuttings of native shrubs and flowers and put woven flax mats in the bottom to hold treats in, made flax braids decorated with native flowers. The birds love the flowers and some of the animals rub scented flowers over themselves like perfume.

One of the ladies donated a bag of hazelnuts for the animals. Donations of native shrub trimmings are always welcomed for the animals. The Capuchin monkeys are having a new area developed for them, including a moat (they don't swim they sink). This was possible only with the help of several local businesses who donated time and materials. To support the project visit givealittle.co.nz/cause/help-build-a-new-capuchin-exhibit-at-natureland

Sandra thanked Jazz with a donation for Natureland.

Upcoming Meetings:

Tuesday 8th October 2024: Coffee meeting at The Villa in Wakefield, 9.45am onwards.

Tuesday 22nd October 2024: Visit to Connings Farm Shop, Factory Corner, Appleby.

Tuesday 12th November 2024: Coffee meeting at The Villa in Wakefield, 9.45am onwards.

Live Well Stay Well is a local health and social group that meets twice a month in Wakefield. Our goal is to keep well and healthy by encouraging good health practices and exercise, but also by having a positive social connection with others in our community. Maybe you are new to the area, or feeling a little isolated and would like to meet and get to know others who live locally, within a friendly environment. Or would you like to learn more about our community? Then our group could be for you.

Our group meets twice a month in Wakefield, mostly on a Tuesday morning from 9.45am to 11.00am. One Tuesday we will meet in a local café for a coffee and chat and the other Tuesday we have a guest speaker focussing on health knowledge or who can help us understand and learn more about our community. This could also be a visit to a local business of interest. We aim to arrange a varied and interesting programme.

The group is run on an informal basis and there is no joining fee. However, when we have a guest speaker or go out for a visit, we do ask for a \$2 gold coin donation to help us cover the hire of the hall facilities and tea and coffee and/or a small gift for our speaker.

We advertise our programme in "Window on Wakefield", your local news magazine, plus on the Community noticeboard in Wakefield. We also communicate what is happening each month by an email group. You are very welcome to join us. We would love to meet you! If you would like to be on our email list, please contact one of the convenors - Sandra 027 609 9202, Sonja 027 374 0500, Christine 027 677 0080 or Deborah 021 303 515.



Wakefield Youth Hangout

by Christine Godfrey

Every Wednesday evening, the Wakefield Youth Hangout bursts into life, and September has been nothing short of electrifying! We kicked things off with an exhilarating visit to the Aquatic Centre — huge thanks to Macy, Luke, and their incredible team for making a splash! The creativity flowed with tie-dye and bead bracelet crafting, engaging our youth in vibrant self-expression.

The excitement peaked at the Bridge Valley Adventure Centre, where laser tag became an epic showdown, thanks to Catlin and her awesome crew. And let's not forget round two of karaoke, where voices soared and friendships deepened. What an unforgettable month it's been! We can't wait to see what thrilling adventures await us next month!



Waimea South Historical Society

by Yo Tye, Secretary

Meeting held 227 August 2024 at Holy Trinity Church Hall 24 Dorset Street Richmond

Our presenter this month was Terry Douglas, a retired fireman from the Wakefield and Nelson brigades from 1968-2000 where he once served as the Wakefield Fire Chief and as the President of the New Zealand Fire Brigade Institute. He provided an in-depth journey of the history of the Wakefield Fire Brigade with many stories along the way.

The first Fire Brigade was formed in the 1880's and a fire bell was mounted on a crow bar outside the grocery store in Wakefield. Dr Pearlless declined an invitation to join this brigade and his decision was soon validated when the bell was rung in an emergency and the crowbar fell injuring the grocer's arm and Dr Pearlless was required to attend the resulting injury.

Some significant dates follow.

In 1953 the County Clerk declared the need for a Wakefield Fire Brigade and fundraising began with a parade to display the flat deck truck with drums, buckets and pumps. A siren, erected beside the Post Office, was donated by the Chief Fire Officer. English fire officer, Mr T R Varley, arrived in New Zealand from London to check all New Zealand Fire Brigades and ordered trailers and pumps from England.

In 1954 the first AGM was held and the School was requested to keep the swimming pool full as a water supply. Mr Varley ordered leather knee boots and red fire buckets and Wakefield Fire Brigade acquired a Land Rover.

In 1955 a single phone line for fire calls was installed in the Post Office to avoid the inconvenience of a 'party line'.

In 1965 a section was purchased and a tin shed placed on it which was later removed to build the new station on the site, which was initially only a building shell with a gravel floor.

In 1968 the Odd fellows Hall in Edward St was destroyed by fire. In mid-winter with a temperature of -10 degrees, the water had to be pumped from the Wai-iti River into a 1000 gallon tank loaned by the Baigent family. The water runoff froze onto the street causing a hazardous situation. To prevent frostbite the Fire officer's duties were revolved and they were fed by a continuous supply of food from the Pene Family who had opened their home. The Chief Officer was seen to don a dry set of clothes, supplied by his wife, in the middle of Edward St.

1977 saw the 111 emergency system established throughout New Zealand.

In 1978 the hose tower was constructed.

In 1983 the Wai-iti River flooded causing the Pigeon Valley Bridge to be washed away. Flooding of the Fire Station and widespread flooding in the village resulted and a temporary supply line to Pigeon Valley was established by way of a line being fired across the river by a surfcaster.

Fundraising events such as dances and fireworks displays in Martin's paddock and then later in the sports fields, were held. Eventually side shows and sausage sizzles became part of the fun and a gate charge was introduced. Crowds of 5000 plus were attending from 1989 onwards and Police Crews were required to assist. However in the late 1990's, because of Health and Safety issues, the Guy Fawkes fundraiser was forced to cease operating. Some of the funds raised had gone to organisations such as Women's Refuge and local schools. Another means of fundraising had been a merry go round which was maintained by the brigade and hired out to local events.

When Terry joined in 1968, unlike today, he had to purchase his own uniform including grey overalls and work-boots. English helmets were worn and equipment was limited. He was also required to sit and pass Institute exams. Over the years Terry's wife and three children have all served as members of the New Zealand Fire Service.

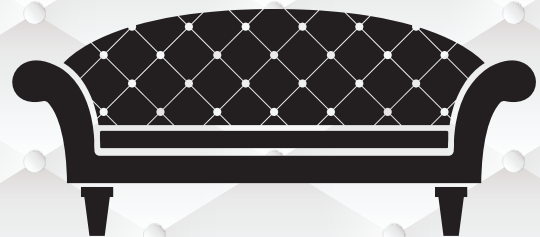
These are only some of the many stories told to us by Terry and he can be assured of the gratitude felt by us all. Thank you Terry.



Outdoor Movie Nights
Wakefield Village Hall - 23rd November
Washbourn Gardens - 7th December

Logos: Sport Tasman, tasman district council, te tai o Aoreere, tasman YOUTH COUNCIL, WAKEFIELD COMMUNITY COUNCIL

VILLA UPHOLSTERY



Craig 022 351 5989 Cherie 022 352 5991

CUSTOM DESIGN & BUILD CHAIRS, SOFAS, OTTOMANS
RECOVERY & REPAIR

Country Players

Sense and Sensibility *by Amby Cowe*

Rehearsals have begun for Wakefield Country Players' summer production – Sense and Sensibility by Jane Austin and Kate Hamill.

With a successful run of Pride and Prejudice in Nelson, director Hugh Neill felt that Wakefield deserved to have a Jane Austin classic gracing the stage in our town hall.

A playful new adaptation of Jane Austen's beloved novel follows the fortunes (and misfortunes) of the Dashwood sisters — sensible Elinor and hypersensitive Marianne — after their father's sudden death leaves them financially destitute and socially vulnerable. Set in gossipy late 18th-century England, with a fresh female voice, the play is full of humor, emotional depth, and bold theatricality.

Sense and Sensibility examines our reactions, both reasonable and ridiculous, to societal pressures. When reputation is everything, how do you follow your heart?

Sense and Sensibility will have 6 performances, showing in late November/early December.

For more information and updates, follow our Facebook page called "Country Players Wakefield Events Information"



FROM CONCEPT TO COMPLETION WE DO IT ALL!

TOTALSPAN
STEEL BUILDINGS

WHO CAN? TOTALSPAN!

03-541 0607

23 Stratford Street, Richmond 7020

nelson@totalspan.co.nz

www.totalspan.co.nz

Craig Smart

CONTRACTING LTD

DIGGERS & TRUCK WORK

- Landscaping - Topsoil Screening
- Root Raking - Site Clearing
- Driveways - Gravel Supplies
- Trenching - Posthole Boring

541 9626 or 0274 440 441
craigandcath@xtra.co.nz

In the Bush

by Evie South

A very busy month indeed, not only with our “normal” maintenance days, but also keeping our fingers on many pulses; the development of the Scout Den at Faulkner Bush to a kindergarten complex, the newly developing Play Space (Playground) at Faulkner Bush and the proposed Tasman District Council Dog Control Policy and Bylaw.

All three will have an environmental “impact”, in varying degrees, on the surrounding Scenic Reserves and with that in mind I am sure all in our community will appreciate that first and foremost the protection of the flora and fauna is paramount to our Society and to the regulations that give them protection under the Reserves Act 1977.

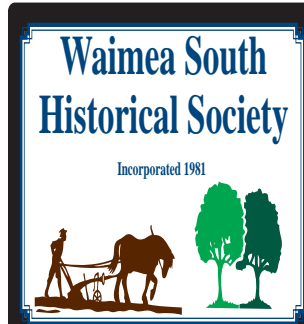
Also just to note that the Play Space planning and development is being undertaken by a subcommittee within the Wakefield Community Council and I am sure as public consultation will be under taken for the further development stages, that you would be most welcome to go along to the Community Councils meeting or contact the Chairperson, Julian Eggers Mobile 027 771 8556 or email eggers213@gmail.com if you have any queries. Or would like a copy of the Destination Wakefield Faulkner Bush Play Space Concept Stages.

Our Society and individual members did submissions in relation to the Tasman District Council DRAFT for dog control policy and by laws for our region. However our submissions concentrated on Wakefield’s Scenic Reserves, we sincerely hope our suggestions will be implemented, and to our mind give benefit to both dog owners, seeking exercise areas and the wider community, who wish to also use these Reserves, for purely recreation purposes.

Back to our “normal” day, saw us again at Robson’s Scenic Reserve, giving our new plantings and their protectors an extra cane, which gives more stability in the wind and goodness they have certainly needed it. In fact we moved also to our last year’s plantings to remove some of the protectors, as many were ready to stand alone. Very thrilled with the growth spurt and the health of these plantings, AND recorded very little loss!

Sincere thanks to Eric Palmer for preparing the sites beforehand from weeds, so that the releasing and checking of the areas was made so much easier. Sadly Eric, whom many of you will know, works many extra hours for us, particularly at Faulkner Bush, has decided to hang up his spray pack and weed eater and just become one of the “lads”. Well Eric we can only THANK YOU on behalf of our Society and Community for your 14 years of commitment and dedication to our Scenic Reserves. You are and will always be SIMPLY THE BEST!

LOVE FOR YOU TO JOIN US – 2nd Saturday of EACH MONTH
Kind regards from the Volunteer Team of The Wakefield Bush
Restoration Soc (2000) Inc –
Phone or Txt 027 907 2879 Landline 03 541 8980
Or Email tuiville@xtra.co.nz



Explore the
past with us
www.waisouth.wordpress.com

**Have an idea for an article
or something you have
written that you would like to
submit?**

**Email us at
windowonwakefield@gmail.com
or ring 541 9005**

Friends of the Trail

by Julian Eggers

This afternoon marked our 6th working bee on the Pigeon Valley to Hoult Valley section of the Great Taste Trail. We worked at the Rotary built shelter area.

We planted 100 native trees donated by Appletons Tree Nursery (a massive thank you!). With eight individuals, we extend our heartfelt gratitude to Richard, Colin, Peter, Gabe, Lachlan, Sally, Digger driver, and Julian – you are all truly legends. Together, we achieved a great deal and are eagerly looking forward to continuing our mission.

This collaboration between the Great Taste Trail Trust and the Wakefield Community Council shows our commitment to maintaining our portion of the Great Taste Trail.

Would you like to participate in our next working bee? Stay tuned as we aim to organize half-day sessions once a month.

Our next weedeating working bee will be third weekend in October.

All our plantings are done for this year. Thank you to the generous donations by our incredible community to help towards beautifying our section of the cycle trail.



Piano and Keyboard Lessons

Dave Hallam PDM (UCT) South Africa

Traditional Classical Piano at Grade Level

Jazz & Contemporary Keyboard Styles

Beginners to Advanced- all ages

Mobile: 021 0319288

E-mail: davehal@extra.co.nz

Website: www.davehallam.co.nz

Teaching Studio in Wakefield Nelson



Wakefield School

Conservation Week - Kaitiaki

Kererū Team - Years 1-3

As part of Conservation week, we learnt what it means to be a good kaitiakitanga / guardian of our environment. We have spent more time outside and over at Faulkner Bush and we headed up to the lookout to draw what we could see and admire our beautiful natural surroundings we have here in Wakefield.

Think Like a Skink

We have also been learning about the two different types of lizards / mokomoko, the gecko and skinks, we have in New Zealand. We are wanting to attract skinks into our garden space between room 15 and the waharoa so we needed to 'Think Like a Skink' and find out what they need to support them making home in our garden.

We learnt that they need four things:

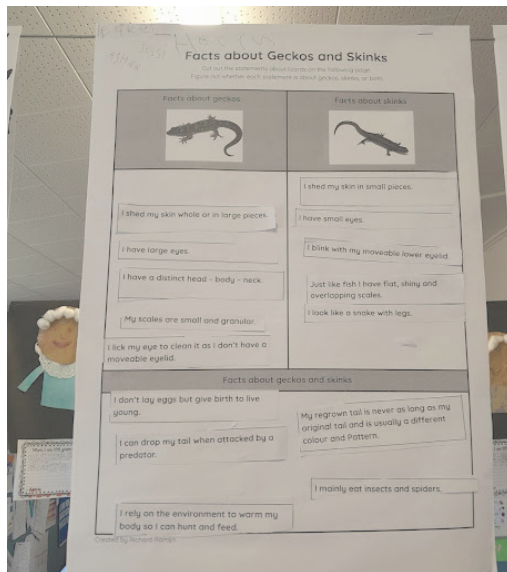
- Protective cover
- Sunshine
- Basking site
- Food source

Natureland Visit

To wrap up our Think Like a Skink learning the whole Kererū Team visited Natureland. We had an amazing time creating enrichment activities for the animals including the kea and the monkeys.

All of our tamariki got a wonderful surprise when the double decker bus arrived at Wakefield School to collect us to take us into Tahunanui for our trip.

What a great way to end a wonderful Term 3!



+
WAKEFIELD PHARMACY
 the caring pharmacy

FAST EFFECTIVE
24 hour relief for Hayfever
& Itchy Skin
+ NASAL DECONGESTANT



TAPS PP2809

Levrix

Shop hours -

Monday 8.30am to 5.30pm - Tuesday 8.30am to 5.30pm - Wednesday 8.30am to 6pm
 Thursday 8.30am to 5.30pm - Friday 8.30am to 5.30pm - Saturday 10am to 12pm
 4 Edward Street, Wakefield - Phone 03 541 8418 - Fax 03 541 9100
www.wakefieldpharmacy.co.nz

Pets Ever After

After Death Pet Care

Cremations

Memorials

Urns

Poster & Canvas Prints

Phone 027 247 8883

Locally owned and operated



www.petcremations.co.nz



SIX SIGNS OF BAD WHEEL ALIGNMENT



Vehicle pulling to the left or right



Vibration in the steering wheel



Uneven or rapid tyre wear



Steering wheel is crooked



Poor fuel economy



Unusual tyre noise when travelling



BENEFITS OF REGULAR WHEEL ALIGNMENTS



Increased fuel efficiency



Smoother driving



Improved vehicle safety



Extended tyre life



Reduced need for repairs

Has it been a while since your last alignment?

Give us a call and we'll make sure you're good to go.

STARTING FROM ONLY \$85



Wakefield Auto Services Ltd

67 Whitby Road, Wakefield 7025
 Phone 541 8121 www.wasl.co.nz



ENJOY THE JOURNEY



CALTEX

Walking in Central Australia

Walking Central Australia's Larapinta Trail

by Peter Verstappen

From Alice Springs in central Australia the nearest coast is about 1,500kms in every direction, north, south, east or west; so when Sylvia and I set off in early August on a hiking trip from Alice we didn't pack our beach towels. Our challenge was a more modest 200kms, walking the renowned Larapinta Trail that snakes through the Tjoritja/West MacDonnell National Park. This is arid country, ribbed with ranges of stark red hills rising a few hundred metres above the vast desert plains that stretch to eye-straining horizons, beneath equally vast skies.

Oh, and did I mention snakes? What about scorpions? dingoes? bull ants? What about clouds of flies? parched desert landscapes and searing heat? Yes, for all our years as trampers, this hike took us into an environment like no other we've ever been in, a waterless, treeless world with creatures that could seriously take the shine off the experience.

The Larapinta trail runs almost due west from Alice Springs, and is mostly walked in a westerly direction – from Alice to Mt Sonder. We chose to do it in reverse, so we could drop off resupply boxes at a few camping grounds as we drove to our start point, and with the lure of finishing right at my sister's doorstep back in Alice.

The westernmost point of the trail is a sidetrip up Mt Sonder, but an untimely bout of Covid held up our start by a couple of days so we skipped that pleasure and plunged straight into the main trail. Within minutes we were revising our expectations. For one thing, the desert here is not a barren waste, it's a garden that flourishes after winter rains, with beds of yellow, cream, pink and purple flowers, groves of shrubs and small trees, over-topped with majestic ghost gums, whose pale limbs and soft green leaves rising against red rock hills or searing blue sky are a photographer's dream.

Another early discovery on the trail: it's been cleverly designed to enable a remote outback experience while remaining connected with at least some essential services. So, at a dozen or so trailheads along its 200km length are shelters, toilets, water tanks and tentsites thoughtfully spread with a layer of soft river sand over the rocky ground. No tramping huts, but in this dry climate our new super lightweight tent was the perfect accommodation. We soon fell into the rhythm of rising before dawn, walking into the sunrise, resting in a shady spot during the midday heat and continuing in the late afternoon to our next campsite.

The trail alternates between ridgeline and plains, the transition from one to the other often through short, spectacular gorges deeply incised in the red rocky hills, oases with ancient river red gums and strange cycads – massive fern-like plants that have grown here for millions of years. Everything here is ancient: three billion-year old rocks; rivers and streams – mostly dry, sandy watercourses – that have remained in the same channels for five hundred million years; and everywhere the echo of human habitation dating back thirty or forty millenia. Nobody lives here now, the Aboriginal inhabitants are confined to outback settlements or town 'camps' in Alice, and early efforts by Europeans to farm or run tourist businesses are long vanished, sunk by drought, heat and flies.

That said, human contact on the trail was frequent and enjoyable. The Larapinta is a popular place for Aussies seeking a winter break, either independent walkers like ourselves, doing the entire trail, or tour groups with guides, walking the more accessible or scenically attractive sections.

Between brief encounters with other hikers, we found ourselves often enveloped in a great silence. In New Zealand even the most remote wilderness is filled with the sound of wind in the trees, of water in streams, lakes or rainfall. Here there is no running water, and too few trees for the occasional breeze to rustle. At times the silence is almost a physical sensation, a pressure on the ears. The experience is even greater at night, when the silence seems to expand under a vast glittering blanket of stars.

The liveliest sounds are the birds; squadrons of small green budgies and finches, kites and kestrels riding the thermals, herons wading solemnly in the occasional water holes deep in rocky gorges. Birds appear to own this landscape: of the creeping, bounding, crawling types of animal life we saw almost none - a couple of lizards, a fleeting glimpse of a wallaby, no snakes, to my disappointment (and Sylvia's relief).

And Larapinta's definitely a winter trip. We timed our hike to fall between the end of frosty winter nights and the onset of summer heat. As it was, on our final few days, long days of 25kms or more, the heat was rising into the high-twenties, sapping our already-stretched energy levels, so, after fourteen days of uninterrupted walking, we were happy to put the final kilometres behind us, finishing with a stroll along Alice's Todd River (dry) to a cold beer (wet) and a warm welcome at my sister's.

Our Larapinta stats: 14 days, 212kms, 1 birthday (Sylvia), about 140 litres of water, 0 regrets.



Wakefield School & Community Pool

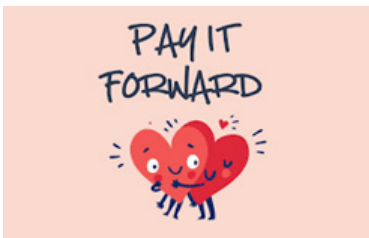
THE COUNTDOWN IS ON - SAVE THE DATE!

Another swimming season is nearing. Be sure to save Sunday 3rd November in your calendar. The pool party will be between 11.30am & 1.00pm, at which time you can purchase your discounted keys and kids can have fun on the inflatable. We have kept our key prices as low as we can for as long as we can but due to the ever-increasing costs, we are having to increase all our key prices by \$10. To cover the cost of replacing the key, we have also had to increase the cost of the bond by \$10 now making the bond \$30. You will however get your bond back at the end of the season when returning your key within the allocated time. We know that times are tough and don't want the cost to be the barrier to you for purchasing a key. We are more than happy to make arrangements to have you pay your key off. Please do make contact with us either via our facebook page or by emailing us on wldswimpool@hotmail.com.

Are you a business looking for advertising space? Did you know you can advertise in the pool area? If this is something that interests you, please get in contact with us to find out more wldswimpool@hotmail.com.



Pay it forward - we are starting a new incentive called "pay it forward". If you are in a position to or would like to pay the value of either a portion of a key or a full key, enabling a family who might not be able to afford a key to have one, we can help with that. Just get in contact with us either via our facebook page, email or speaking to one of the lovely office ladies at the school office.



We are always looking for more committee members. Did you know that the Wakefield School and Community Pool is operated by a committee and is a not-for-profit organisation?

We value the input from our community and those who utilise the facility and would love more people to help us to keep the pool operating, if this sounds like something you would be interested in and would like to know more or would like to become a committee member feel free to drop us a message on the details above.



OPEN DAY DISCOUNT

Wakefield School & COMMUNITY POOL

WET'N WILD OPEN DAY

SUNDAY 3RD NOV 11.30AM - 1PM

ENTRY - DONATION

GIANT INFLATABLE OBSTACLE IN THE MAIN POOL!

Sausages and soft drinks available to purchase.

GRAB YOUR FAMILY SEASON KEY!

Only \$135* if purchased on the day.

Cost: \$145 (from opening until 31st November) \$155 (from 1st December until 31st January). \$90 (from 1st February until 28th February). \$65 (from 1st March until the end of the season - usually the first weekend of April). **Senior Citizens Key** (65 years and over on presentation of gold card). Cost: \$110 (from season opening until 31st January). \$75 (from 1st February until 28th February). \$55 (from 1st March until the end of the season - usually the first weekend of April). All prices include a \$30 refundable bond, (refund subject to receipt of your key at the conclusion of this season within the specified timeframe).

All Children must be **Actively supervised** by a parent or caregiver. For more info please contact the School Office: Edward Street Wakefield Ph 03 541 8332 Email: wldswimpool@hotmail.com

WAKEFIELD SCHOOL TWILIGHT GALA

3 - 6:30PM SATURDAY 2 NOVEMBER 2024



Planning is underway for another GREAT FAMILY EVENING OUT!

The Wakefield School PTA would love to hear from any individuals or businesses who are able to help the school through the donation of prizes for the silent auction, products for the food stalls, resources for the activities or sponsorship of an area.

We would also be grateful for plants and produce, and good, clean items for the Book, Toy, White elephant or Clothing stalls. The focus this year is on quality not quantity.

If you are able to support the school in any of these ways then please leave your name and number at the school office for a member of the PTA to be in touch. Thank you!

Enjoy a meal...

BBQ - HAMBURGERS - WILD PORK
SANDWICHES - CAFÉ - KIDS FOOD
HOT CHIPS - SPIT ROAST MUTTON
GLUTEN FREE

Kids Activities

BOUNCY CASTLES - PONY RIDES
MOTORBIKE RIDES - CRAZY HAIR
FACE PAINTING & MORE TO COME!

FANTASTIC STALLS

SILENT AUCTION - PRODUCE
CLOTHING - BOOKS - TOYS
WHITE ELEPHANT - PLANTS
MYSTERY BAGS & MORE!

Featuring

LIVE BAND - KAPA HAKA - CHOIR -
ROCK BAND & MORE!

On wet or fine

Or Email: wakefieldgala@gmail.com
Phone: 021 221 1009 [@twilightgala](https://www.facebook.com/twilightgala)



Wakefield Volunteer Fire Brigade

Welcome to our new Chief Fire Officer – Wattie Mortimer

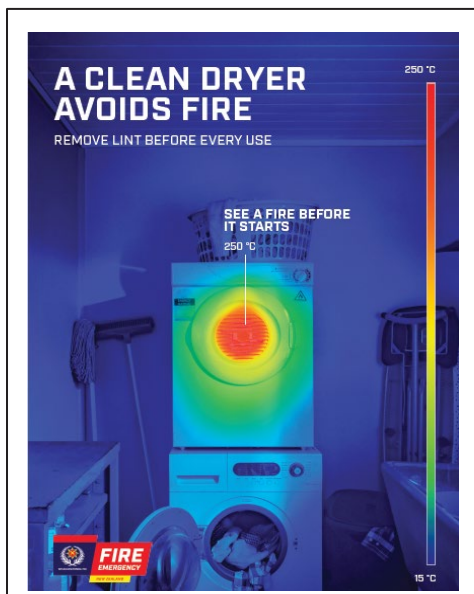
I am honoured to be appointed to the role of Chief Fire Officer of the Wakefield Volunteer Fire Brigade. I am currently employed by Fire and Emergency NZ as Property Coordinator for the Tasman, Marlborough, and West Coast areas.

My Wife Christine and I recently moved from Lake Rotoiti, where I was also Chief Fire Officer, at the start of the year to be closer to our two teenage girls who attend Garin College. Christine runs our Cattery Business in Spring Grove.

In addition to my role within the Lake Rotoiti Fire Brigade, I have also been actively involved in other areas of the Community and have participated in various projects and fundraising events, including the organisation of the local Community Sailing Club and the upgrading of the local sports courts. I am currently a member of the Garin College Hostel Board of Trustees and previously held positions on the Lake Rotoiti School Board and Rotoiti District Community Council.

Wakefield VFB is a busy Brigade that is dedicated to serving its community in many ways during their times of need. We have an awesome team of multi-talented people, highly trained to meet the needs of our area. Our focus is not only in responding to incidents but extends to reducing fire risk and helping people being prepared for an emergency.

I am looking forward to engaging with all within the Wakefield Community in working on fire risk reduction initiatives, community engagement and responding when the call for help comes in.



Dryers cause more house fire than you think.

Over the last 10 years, we have observed a 54% increase in heat source related house fires we've responded to in May-July compared to the rest of the year. The majority of these are caused by or related to the increased use of heat sources in winter, such as heaters, chimneys, ash disposal, electric blankets and dryers. Encouragingly, heat source related house fires have decreased by 7% in the past 3 years (compared with the prior 6 years).

Do you know if your elderly whānau members have working smoke alarms?

We talk a lot about what you can do to protect yourself and your home from fire, but not everyone can do that for themselves. Next time you visit someone who might need extra support, make the effort to make sure they have enough smoke alarms which are working, and to discuss their escape route.

If you don't live close enough to pop over, you can also request a home fire safety visit for them on our website:
<http://www.fireandemergency.nz/.../home-fire-safety-visits/>

Total calls for the year so far 186

Calls August

Medical X 14 , Structure fire x 2 ,
Plane crash x 1 , Vegetation fire x
2 , Motor Vehicle Crash x 6

Calls September

Medical x 9 , Structure fire x 3 ,
Motor Vehicle Crash x 1




**Complete care
for your animals**


Our committed veterinary team pride themselves on delivering optimal care with personal service.

Contact us for: Vaccinations • Health checks
• Premium food • Health plans for farm/
production animals & more...

MOTUEKA 400D High St 03 528 8459	MĀPUA 69 Aranui Rd 03 540 2329	RICHMOND 79 Gladstone Rd 03 544 5566
---	---	---

vetlife.co.nz

VLA0006. Vetlife is a registered trademark - all rights reserved.



**THE TINY HOUSE
COMPANY**

QUALITY AT A PRICE YOU CAN AFFORD



SIMON & ARRON WHITTAKER
027 541 8507 OR 027 541 8509
info@thetinyhousecompany.co.nz
thetinyhousecompany.co.nz

Pigeon Valley Wakefield



**REDWOOD
BUILDING**
Services Ltd

- Design and Build
- New Housing
- Additions/Renovations
- Light Commercial
- Farm Sheds
- Any Location

f 021 154 6040
E: redwoodbuildingservicesltd@gmail.com

Our in House Design Service Provided by:

LKR BUILDING DESIGN

- Residential Design
- Commercial Design
- New Builds & Renovations

f 022 127 0321
E: lkrbuildingdesign@gmail.com





**Wakefield
Plumbing**

Wakefield Plumbing & Gas Fitting
With over 30 years' experience.

For all your Plumbing & Gas Fitting needs
including repairs & maintenance.

Califont & water cylinder installs & replacement.

Ph Les 0220787322
www.wakefieldplumbing.co.nz

Wakefield Village Kindergarten

by Maretta Burbidge

At Wakefield Village Kindergarten we have had another very busy and fun month. We enjoyed celebrating te wiki o te reo Māori, including making our own piupiu and practicing using poi and rakau as we sang our favourite waiata.

We have had regular walks over to Faulkner Bush to check out the progress on the new play space. Since we were given a plan we can work out what part they are working on each time we visit. The play space is going to be such an incredible asset for our community and we are all very excited to come and play when it is ready.

We have been exploring a variety of sensory experiences over the past few weeks. Some of the provocations have enabled us to use our senses in unfamiliar ways, which has been interesting and fun.

To support Daffodil Day and Wig Wednesday we had dress up days and loved seeing the variety of creative hairstyles. We thank everyone for their generous donations that we were able to pass on to the Child Cancer Foundation.



The teaching team are busy planning for the upcoming holiday programme which is sure to interest and delight the children.



Live Well, Stay Well

**Tuesday: 8 October and 12 November Coffee and a Chat
At The Villa in Wakefield 9.45am**

Tuesday 22 October 2024 9.45am

Visit to Connings Farm Shop, Factory Corner, Appleby

This will include a tour of the shop (and probably coffee), then along to their farm on Edens Rd to see the hot houses and the planting procedures.

**For information contact Sandra 027 609 9202,
Christine 027 677 0080 or Deborah 021 303 515**

WAKEFIELD COMMUNITY COUNCIL | **tasman** Te Kaitiaki o te tai o Aorere
district council



**6:30PM - 8:30PM
WEDNESDAY NIGHTS
13YRS - 18YRS OLD
WAKEFIELD VILLAGE HALL**

**PING-PONG, BASKETBALL, FOOSBALL, AIR HOCKEY
CHILL OUT AREA, MUSIC, BOARD GAMES, THEME
NIGHTS & FOOD.**

PROUDLY SPONSORED BY: **welcome** REAL ESTATE with Wendy Pearson **WE**

WAKEFIELD YOUTH HANGOUT

Halloween at Willow Bank 2024

by Julian Eggers

As the moon rises high over Willow Bank, the air crackles with excitement and a hint of dread for Halloween 2024. On Friday, the haunted village scare zone awakens from its slumber, where shadows twist and ghostly whispers beckon the brave from 8 to 10 PM.

Dare to wander through the chilling paths, where ghostly figures lurk and spine-tingling surprises await. But fear not, for Saturday brings a family-friendly twist from 5 to 7 PM, as little ghouls and goblins embark on a delightful trick-or-treat adventure in a safe, inviting atmosphere.

As dusk falls, the haunted village reopens from 8 to 10 PM, promising even more frights and thrills. Enjoy tantalizing food, refreshing drinks, and lively entertainment as you immerse yourself in the spine-chilling spirit of the season. Enter if you dare—Willow Bank's haunting awaits!



Artistic Rollerskating Champs

by Michelle Taylor

Young local Ali & family wish to thank everyone for all the support and encouragement received, leading up to the National Artistic Rollerskating Championships held in Wellington in July.

It was a huge week, we learnt tonnes, made new friends, seen some incredible skates including Liam and Phoenix who represented NZ in Italy this month and we're incredibly proud to share that Ali brought home 1 silver & 2 bronze medals for her events!

Ali also recently competed in the Nelson Open Day event (Aug) and earned 5 gold medals!

Thanks again for all the support and keep an eye out on the Nelson Artistic Roller Skating Club facebook page for updates, raffles and events which help get some talented kids amazing experiences and our region represented.

Big love to coaches HayHay, JP, Tara & Milo.

(Photos of Nationals in Wellington)



Higgins Heritage Park Happenings

by David Win

We are certainly well into the grass growing (and mowing) season, along with the trees changing from winter to spring, the park is looking really great and welcoming. It was a pleasure to have Wakefield and Richmond Schools at the Park recently as part of their curriculum incorporating transportation, movement & technology.

We have also been quietly working on an exciting project which is now well underway. The two pictures show some of the first kits to be built – what is it going to be?

This month, its an oldie but a goodie on display at the Nelson Vintage Engine & Machinery Club. The R & P Tractor, owned by Roger Quinney was previously used in the Motupiko area and is one of only three restored tractors remaining in the world today. All three being in the South Island of NZ.

The R & P was manufactured in 1917 in Alma, Michigan, USA and built on the same assembly line as the Ruggles & Parsons Republic Trucks. Approximately 200 tractors only were built with manufacturing ceasing in 1920.

The tractor was a trim and, for its time, modern looking machine with rear fenders and louvered hood. It was powered by a Waukesha 4-cylinder, 3 ¼ inch bore X 5 ¼ inch stroke engine and rated at 12 drawbar and 20 belt horsepower, with a 3-speed truck-type transmission. The tractor weight was 3,600 pounds.

The outstanding feature of it were the rear wheels, which R & P called "Track Laying Double Traction Wheels" and claimed the (w)heel makes its own road bed and lays a broad, solid iron track on which the wheels roll... the sure footed track sections are held against steel wheel tires by means of springs which ensure the wheels run smoothly over the tracks. The wheel places the track sections on the ground, the heavy channel lugs being forced into the ground by weight of the wheel. After the wheel has passed over the track section, it is lifted by the coil spring. It was promoted as "The R & P Wheel is simplicity itself and eliminated expensive upkeep". One account says the wheels were developed in Italy during World War One for their army's artillery tractors, while another says the wheels were designed by Republic "for hauling big guns through the mud of Passchendaele in the First World War."

Next Park Open Days:

Sunday 20 October – Museum Sheds and Jigger Rides
Sunday 3 November – Steam Up and Museum Sheds open
Sunday 17 November – Museum Sheds and Jigger rides
Sunday 1 December – Steam Up and Museum Sheds open
Sunday 22 December – Museum Sheds and Jigger rides
Thursday 2 January 2025 – Community Craft Fair, Steam Up and rides
[enquiries from craft stalls welcome – info@higginsheritagepark.co.nz]

www.higginsheritagepark.co.nz, Email:info@higginsheritagepark.co.nz
Follow us on Facebook



75th REUNION
Lake Rotoiti School

Catch up with old friends
tour the school
afternoon tea
tug of war
photos
and some kai (koha if able)
BYO drinks (tea & coffee provided)

26 October 2024
2pm til 8pm
@lake Rotoiti school

RSVP: Ali.sue.nicholls@xtra.co.nz or 0212660771



LITTLE SPRIG WAKEFIELD

facebook.com/littlesprigwakefield
instagram.com/littlesprigwakefield
sprigandfern.co.nz/wakefield
wakefield@littlesprig.co.nz
03 922 9910

OPEN TUESDAY - SUNDAY
6 EDWARD STREET, WAKEFIELD

Tui Talk by "Petros"

by Peter Donovan

Tuis are all quite smart, but this young one, home from his first year in Business Law, was especially keen to impress...

We Tui's could do really well for ourselves y'know...

(Long silence from older companion)

Intellectual property... our name, our brand. Everyone is using it, and we aren't getting any royalties. Shoe polish, cheese, garden supplies, dairies, bakeries, all sorts of "Tui" products... We've got rights. I could do a class action. There's loads of money in it. We could make millions!

(Long pause)... Maybe not a good idea to talk about our name.

Why? How d'you mean?

Well, you wouldn't want anyone to remember what they used to call us would you?

What was that?... I didn't know we had another name.

Yes we did: Parson Birds. You know, reverends, priests, ministers. From our white neck-scarf, like a vicar's collar. That wouldn't help, would it? We'd have to behave ourselves. Flap a wing wrong and we'd be mocked out of the sky.

You're kidding me! No way. Parson Birds?

Yeah, Right!



Tasman Bay Chiropractic

Open six days 64 Oxford St, Richmond

Referrals, families and all new patients welcome

FOUR chiropractors now available

Visit our website or call us **03 544 4554**

tasmanbaychiropractic.co.nz Find us on  

Keeping you in the game since 2002



Wakefield ELECTRICAL LTD

We Do All Electrical Work (incl. Caravans WoEFs)

Andrew Smith - Electrician/Inspector

Est. 2013

03 541 8797 - 027 441 8797

"Your Local Electrician"

FENCE WORX

FOXHILL

- Rural and Residential Fencing • Decks •
- Sheds • Pergolas • Retaining Walls •

Call or email today for a free quote

021 193 6331

info@fenceworxfoxhill.com

www.fenceworxfoxhill.com



Nelson Travel Broker

your journey starts here

locally Owned & Operated

Phone: 03 541 8417 or 021 545 799
Email: sue@nelsontravelbroker.co.nz

Check out what my clients have to say at
www.nelsontravelbroker.co.nz

A proud member of Travel Connections NZ Limited.



all about you
BEAUTY THERAPY

Services include

Skin treatments, Spray Tanning,
Waxing, Tinting, Manicures and Pedicures

Enquire about group bookings for a girly catchup

Gift vouchers available

By appointment only

Come and relax at the salon that is....

all about you

 103 Wakefield-Kohatu Highway
www.allaboutyoubeauty.co.nz
Mobile: 027 6143 298

Our Place - Wakefield Community Hub

Report from the Waimea South Community Facility Steering Group

by Laura Richardson

Since last we wrote the community hub project has been moving forward in a number of key areas.

Project Management

Since approving our project in its Long Term Plan (LTP) in June, the Tasman District Council has secured interim project funding so work can continue until the funding budgeted in the LTP begins in July 2025.

The TDC has assigned a Project Manager, Martin Brown. Members of our design committee have met with Martin to bring him up to speed with our work. Martin has shared a proposed timeline for the project and also reported this to the Wakefield Community Council management committee.

An advisory group, to include community representatives, will be set up shortly to manage the next phase of project design and procurement.

The TDC's proposed timeline sees design work and consents completed in time for construction to begin in early 2027, and the hub completed by mid-2028. If that seems a long way off, remember we've been working on this since 2021! There's still a lot of work to be done.

No decisions have been made yet about the final location, size and scope of the new hub building. We'll keep sharing emerging plans with the community to make sure your voice is heard in decision-making. All partners in this project remain committed to getting the best facility to serve our community needs now and into the future, while balancing needs and wants within the budget and other considerations. Watch for opportunities coming up where you can keep having your say.

Wakefield Community Council

Our Waimea South Community Facility steering group has met twice recently with the Wakefield Community Council management committee to strengthen this key relationship as we move forward with planning the new hub and its role in our community.

Separating Brightwater and Wakefield

The combined Waimea South project, covering both Brightwater and Wakefield, is gradually peeling into two strands, with our community hub becoming a stand-alone project. We support this move, as it lets each community focus on its own facilities. The two projects still share a common budget and timeline in the LTP, and we'll keep working together to find ways to share resources to keep down costs.

Fundraising and Design

We have set up two sub-committees of our steering group, one to manage the design process and the other to organise fundraising. While the design group works closely with the TDC and community on facility planning, the fundraising committee is beavering away on a fundraising strategy.

Under the existing budget in the LTP, our communities have to raise \$3.1million in a budget of \$13.7million covering both the Brightwater and Wakefield projects. We won't know exactly what Wakefield's share of that is until the design work is completed, but it won't be less than \$2million. This is a superb challenge for our community, one that needs us all to be involved.

If you have fundraising experience, ideas or energy we want to hear from you now. For this, and any other feedback, reach us via the contact page on our website: (<https://www.waimeasouth.org.nz/contact/>) or phone 021 047 1092.

AND...

follow us on Facebook (<https://www.facebook.com/WakefieldCommunityHub>)



Wakefield Health Centre

Excuse Me, Your Epidermis is Showing!

by Dr Wayne Hurlow

As summer begins to set in (as I write this the hills have been covered with snow) it is an important time of the year to consider how we are protecting our skin from UV damage.

This is important for two reasons:

1. Our SKIN AGES QUICKER ie wrinkles, thinning due to sun exposure
2. UV damage is the cause of many SKIN CANCERS

Here are PRACTICAL things you can do to PROTECT your skin:

1. Apply sunscreen 15min BEFORE you go out in the sun in the morning and reapply EVERY 2 HOURS if working outside
2. Wear BROAD BRIMMED HAT that keeps you head/neck in the shade
3. Long-sleeved shirts/pants are helpful in avoiding direct sunlight

If you have previously had skin cancer removed or sun damage treated, or if you have a strong family history of skin cancers, then these steps are very important to keep you safe.

It is also important to keep a proactive approach with regular skin checks if you are at increased risk of skin cancers. If you'd like to know what your risk is, then go to the link below or follow the QR code:
<https://www.scanyourskin.org/risk-prediction-tool/>

Use sun screens with SPF 50+ for the best protection.

See you out there!

AI in Your Consultation

Moving with the times. Some of our GPs are using a tool called Heidi AI which assists in writing notes into patient records.

This should improve the consultation experience as your GP doesn't have to type away while talking or examining you.

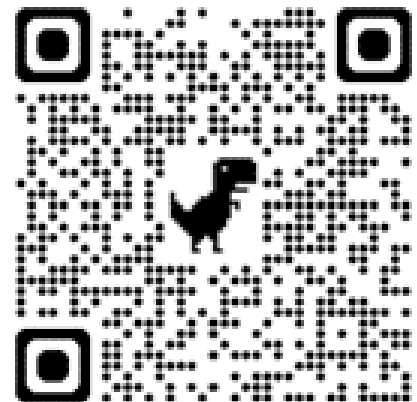
There are no privacy issues as the information goes directly into your notes, as normal, on our patient management system.



Wakefield Health Centre Surgery hours:

Monday to Friday 8.30am – 5:30pm
Wednesday 8.30am – 7pm

Phone 541 8911
12 Edward St Wakefield



Dry Hire Spits, Meat Supplies and Catering



027 299 0342
www.smokenandspits.com





"...for all creatures great & small..."

HOURS:

Monday 8.30 – 5.00 with Brenda consulting all day
Tuesday 8.30 – 5.00 with Brenda - morning consults only
Wednesday 8.30 – 12 Nurse only
Thursday 8.30 – 5.00 with Paula – morning consults only
Friday 8.30 – 12.00 Nurse only

Ph 541 8974

info@tcvet.co.nz * www.tcvet.co.nz
Edward Street, Wakefield

Head office 35 McGlashen Avenue, Richmond



544 1200 24 hours

Shone & Shirley

FUNERAL DIRECTORS

EST 1862

FAMILY OWNED & OPERATED



Goodbyes are different for everyone

Waimea Menzshed built our trailer hearse from recycled rimu. This can be towed by any vehicle with a towbar. One of the many options which can make a final farewell unique.

Our family caring for your family

03 546 5700 - 24 hours

shoneandshirley.co.nz



Psst! Have You Heard?

More and more locals are choosing
Ed Thynne Hearing.

"After trying hearing aids many years ago, which didn't work, I was amazed at the difference hearing aids from Ed made. Sound was rich and full without being overwhelming"

-Peter, Tasman

Visiting Wakefield Health Centre fortnightly



Call: 03 526 8221

Email: ed@edthynnehearing.co.nz
Web: edthynnehearing.co.nz



Proudly 100% Kiwi owned and operated

Community Notices



ADAPTIVE RESILIENCE SOLUTIONS

WHAT TO DO WHEN THE POWER GOES OUT



When the power goes out, your home can feel a bit stuck – no lights, no appliances, and no Wi-Fi. With a few simple steps, you can stay safe and comfortable until everything's back on.

Know the cause of the outage by checking your Antenna App or the Wakefield Facebook page.

THE BASICS

Keep torches, headlamps, and battery-powered lanterns easily accessible. Avoid using candles, as they can be a fire hazard.

In winter, have plenty of blankets, sleeping bags, and warm clothing available. Use layers to keep warm.

In summer, use battery-powered fans, stay hydrated, and avoid physical exertion during the hottest parts of the day.

WHAT ABOUT FOOD?



Keep your fridge and freezer doors closed as much as possible. A full freezer will stay cold for up to 48 hours, and a fridge for about 4 hours.

Use a camping stove, or portable gas cooker for hot meals. Always use them outdoors, in a well-ventilated area, and never inside your home or garage.



STAY CONNECTED

Keep your devices, power banks, and batteries fully charged whenever possible. Invest in solar chargers or a car charger for your phone in case of an extended outage.

If you have a generator, know how to use it safely. Always operate it outdoors in a well-ventilated area to avoid carbon monoxide poisoning. Keep fuel on hand to run it if necessary.

If it's safe to do so, turn off major appliances and the main power switch to avoid power surges when the electricity returns. Leave one light on so you'll know when the power is back.

If someone in your household relies on medical equipment, have a backup power source or make a plan to stay with friends or family that does.



Wakefield & Districts
ANGLICAN CHURCH

YOU'RE INVITED TO

Food and Faith at Five

SUNDAYS 13 & 27 OCT @ 5PM

FAMILIES OF ALL AGES WELCOME

WAKEFIELD WORSHIP CENTRE
120 EDWARD ST, WAKEFIELD



A simple format: dinner with a chance to build friendships and go deeper with questions of faith. All are welcome.

FOR MORE INFO: PHIL GREENWOOD, PHILG.STBARNABAS@XTRA.CO.NZ



Ecclesiastical Tour of Historic Wakefield Churches plus a Pioneer's residence

Thursday, October 31
10am - 12:30pm

Meet at St Johns Anglican Church carpark.
To register text Margaret Clark 027 541 96 93
or email m.r.clark@xtra.co.nz by 29 October.

STEP OUT!

1-31
OCTOBER

For more information visit
tasman.govt.nz
Step Out Nelson Tasman



WAKEFIELD
COMMUNITY
COUNCIL

We invite you to



At the next
Wakefield Community
Council Meeting

Monday 21st October 2024
7:00pm
Wakefield Village Hall



Community Classifieds

WAKEFIELD TOY LIBRARY

As we settle back into the Old Library building opposite the school on Edward Street, we want to remind everyone that we are always interested to hear about what toys you think we should add to our collection.

You can share your ideas by emailing us on wakefieldtoylibrary@gmail.com or pop in and see us during our opening hours,

Saturday 10:00am-11:00am
and Mondays 3:15pm-4:30pm.

The Wakefield Community Toy Library is for everyone!

FOR SALE *August*
Agapathus plants; white.
Mature, healthy.
\$1 each or \$30 the lot.
Ph 03 265 5066

FOR SALE *October*
2 autumn born hereford/fr x steer calves.
Very quiet, electric fence trained, well grown, black with white faces.
Ph 0211680324

FOR SALE *October*
Dolls, dolls clothes, knitted and sewn.

Will also make outfits for your daughters dolls out of her favourite clothes eg jeans, frocks and t-shirts.

Phone Judy on 541 8342 or 027 327 5373

Spring Grove Church of Christ

Main Road, Spring Grove
Worship and Communion Sundays 10am
You are welcome to attend

"Christ sets you Free from Worry"

"Therefore do not worry about tomorrow, for tomorrow will worry about itself. Each day has enough trouble of its own."
Mathew ch 6 vs 34 NIV



WAKEFIELD ANGLICAN COMMUNITY LUNCHES

The monthly Community Lunches held in the Worship Centre, will be on the 3rd Thursday of each month at 12 noon, from February until November.

Welcome to any who would like to attend and enjoy a meal and fellowship.

To assist with catering it would be helpful if those wanting to attend can phone Liz Massey 021 1850 168 the previous Monday. Otherwise, just turn up.

Lunch date this month: **October 17**

Further dates:
November 21

**Higgins Road
Frozen Blueberries
For Sale \$15 per kg
Orders to
Sue - 021267 1298 or
Rob - 021 0723 925**

wakefield Craft Group

**Come and join the ladies Craft Group
held on Wednesday mornings
in the Fire Brigade Supper Room
Pigeon Valley Road
9.00am - 12pm**

**Bring any project - sewing, knitting, crochet.
Learn to knit or crochet or just come for a look
and join us for tea, coffee and company.
Small donation**

For more information phone Judy on 5418342



An enthusiastic & supportive group exchanging ideas

Wakefield Village Hall



THURSDAY 9.30 am-noon

Bring your Pencils, Paint & Pastels

\$4 donation per session

Everyone Welcome. All levels of interest

For more information checkout Wakefield Website

<https://www.wakefield.org.nz> Clubs & Societies

Community Directory

Rutherford Memorial Hall
658 Wakefield-Kohatu Highway, Foxhill
Sue White 027 474 6324
www.lordrutherfordhall.org.nz

Higgins Heritage Park
Secretary: David Win 027 631 6786
info@higginsheritagepark.co.nz

Higgins Park Community Fair
David & Diane Win 544 7096
info@higginsheritagepark.co.nz

Spring Grove Drill Hall
C Stratford 542 3992

Totaradale Golf Club
Sue James 541 8030 totaradalegc@gmail.com

Wakefield Anglican Church
St Johns on the hill
Traditional Service: 9.00am
1st Sunday of each month
The Worship Centre
Service: 10.30am every Sunday
Food & Faith: 5.00pm every 2nd & 4th Sunday
Ph 541 8883 wakefieldanglican@xtra.co.nz

St Johns Worship Centre
Bookings Nigel Massey 027 243 1207

Wakefield Community Library
Wendy Gibbs 541 8490
Pam Dick 541 8392
Hours - Tues 10.30 -11.30am
Friday - 2.30 - 4pm
(When library is not open book returns
can be left at Hair Raisers Salon)

Wakefield Football Club (Seniors)
wakefieldfootballclub@gmail.com

Waimea Plains Football Club (Juniors)
waimeaplainsfootballclub@gmail.com

Wakefield Medical Centre
541 8911

Wakefield Pharmacy
541 8418

Wakefield Playcentre
541 7097

Wakefield Volunteer Fire Brigade
CFO Wattie Mortimer 022 492 8841
DCFO Dot Ashton 027 543 0529

Willowbank Heritage Village
willowbank2002@gmail.com

Country Players (Drama)
Jen Amosa 541 8139
enquiries@countryplayers.org.nz
www.countryplayers.wordpress.com

**Nelson Vintage Engine &
Machinery Club**
Allan 027 319 7427

Pinegrove Kindergarten
03 542 3447

Rural Women
Diane Higgins 03 542 4388

St Joseph's Catholic Church
Mass - 2nd Saturday each month
Parish Priest Seth Pijfers 544 8987

Waimea Sheepdog Trial Club
Sally Powell 021 773 461
Email: sally@tcvet.co.nz

Waimea Area Quilters
Kay Norgate 021 0811 4860
Marilyn Gibbs 03 541 8435
marilyncolingibbs@gmail.com

Wakefield Book Group
Mahala White - 541 8933 or
Chrissy Harris - 541 9596

Wakefield Bush Restoration Soc Inc
Evie South 541 8980 or 027 907 2879

Plunket Nelson Area Office
For appointments etc 539 5200

**Wakefield School/ Community
Swimming Pool**
C/- Wakefield School

Target Shooting Wakefield
targetshootingwakefield@gmail.com
Holly Gibbons 022 406 1674

Wanderers Sports Club
027 714 6160
jimmy@wandererssports.co.nz

Wakefield Toy Library
Saturday 9.30-11.30am
wakefieldtoylibrary@gmail.com

Wakefield Art Group
Thursdays 9.30am - 12pm
Alison 541 8822

**Marlborough Nelson Marine
Radio Assn**
Adrian Mullan 021 118 4832
www.mmr.org.nz

NZ Postcard Society Inc
Evie South 541 8980 or 027 907 2879

Spring Grove Church of Christ
Meet Sundays 10am
info.springgrovechurch@gmail.com

Waimea South Historical Society
Yvonne Tye 021 542 338

Wakefield Bowling Club
Phone club rooms on 541 8556
(Please leave message if
answerphone comes on).
www.wakefieldbowls.co.nz

Wakefield Brightwater Book Club
Sue McAuley 544 7325
sue.mcauley@ncc.govt.nz
Meets last Wed of every month

Wakefield Community Council
Julian Eggers 027 771 8556
eggers213@gmail.com

Wakefield Preschool
Contact: 541 8086

Wakefield School PTA
ptawakefield@gmail.com

Wakefield Tennis Club
Ngair Calder 027 279 9938
www.caldertennis.co.nz

Wakefield Village Hall
Amby Cowe
ambynz@hotmail.com
541 8869

Window on Wakefield
Articles & Content - 541 9005
Sonia Emerson

Window on Wakefield
Advertising - 541 9641
Genie & Lindsay Bradley

Wakefield School
Edward Street 541 8332

Justice of the Peace
Katie Greer
Ph 021 547 756

AED DEFIBRILLATOR LOCATIONS - AVAILABLE 24/7

Wakefield Four Square, Wakefield Bowling Club, Wakefield Football Club, Highfield Farm, Kohatu Flat Rock Cafe, Old Tadmor Store, Dovedale Hall, 29 Moonlight Road Glenhope, Corner of Totara View Road and Kilkenny Place, Corner of Martin Ave and Lord Auckland Road, Southfuels Spring Grove, Belgrove Cafe and Bar [what was], Lake Rotoiti Fire Station, Golden Downs Golf Club, Totaradale Golf Club.

CIVIL DEFENCE - WAKEFIELD AREA COMMUNITY RESPONSE

In the event of an emergency, your first task is to ensure the safety of your own home, family and neighbours. Once you have attended to this, if you have **specialised skills/ equipment**, and/or feel you can assist others; or require assistance yourself, please make your way to the Welfare Centre which will be at the St Johns Worship Centre in Edward Street [unless notified otherwise].

Please note that the existence of a Welfare Centre does not absolve each individual from their **responsibility to be personally prepared**. You should ensure that you have your own **survival kit** in place, and that you are able to be **fully self sufficient for at least three days**.

In the event of an emergency, for urgent public messages, tune in to:
More FM 94.1, Classic Hits 89.8, Fresh FM 95.4



Make the most of your Property Sale, take advantage of my local experience, and ensure you

- Don't pay too much commission
- Pay a fee that represents value

When you choose me to sell your property, I can afford to support these local community organisations.

Proudly Supporting



welcome

welcomerealestate.co.nz

For an expert assessment of your property please give me a call



Wendy Pearson
Owner and
Sales Consultant
021 567 722